

SHADOW^{RT}

USER GUIDE

Models covered by this manual include:

SL427 (2) x 900 watt
SL428 (2) x 1000 watt
SL429 (2) x 1500 watt
SL441 (4) x 110 watt
SL442 (4) x 150 watt
SL443 (4) x 350 watt
SL445 (4) x 500 watt
SL447 (4) x 750 watt

COMMAND LIGHT
P.O. BOX 87
LOVELAND, CO 80539

PHONE: 1-800-797-7974
FAX: 1-800-667-4296
WEB: www.commandlight.com

This document supersedes all previous documents.
Effective Wednesday, May 02, 2007

Breakage or Damage During Shipment

The transportation company is fully responsible for all shipping damage and will resolve problems promptly if you handle it correctly. Please read these instructions carefully.

Examine the contents of all shipping cases. If you find any damage, call your transportation agent at once and have them make a description on the freight or express bill describing the damage and the number of pieces. Then write us and we will send you the original bill of lading. Get a claim blank from the express or truck company. Fill the claim form out. Attach the claim blank to the original bill of lading together with a copy of our invoice. Attach a memo on which you show the value of the damaged goods. Mail or hand these papers to your local transportation agent. They will process your claim with reasonable promptness.

Please note, we cannot and will not enter claims for damages. If we filed claim here, it would be sent to your local freight agent for verification and investigation. This time can be saved by you filing the claim directly. Every consignee is on the ground floor, in contact with the local agent who inspects the damaged goods, and thus, each claim can be given individual attention.

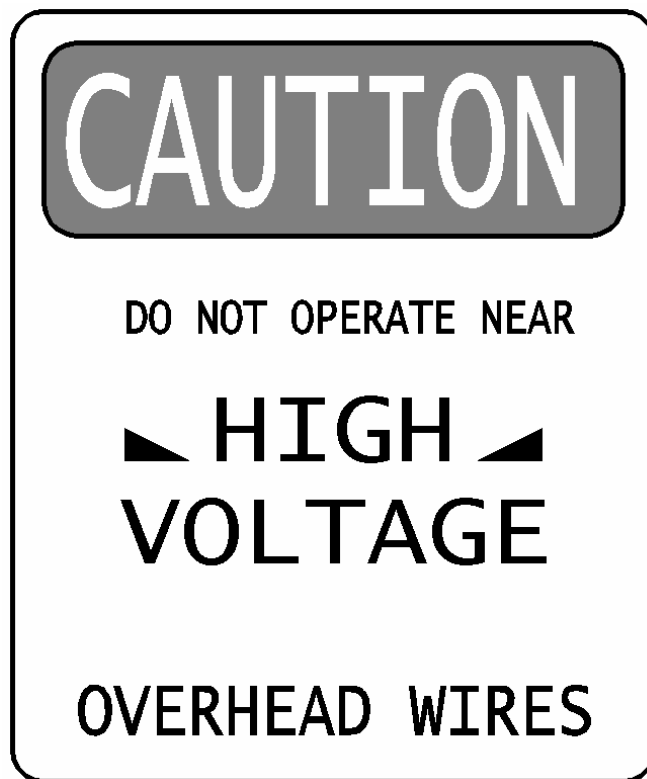
Since our goods are packed to comply with the regulations of all railroad, truck, and express companies, we cannot allow deduction from any invoice because of any damage, however, be sure to file your claim promptly. Our goods are sold F.O.B. factory. We take receipt from the transportation company certifying that the goods were delivered to them in good order and our responsibility ceases.

It is seldom that any breakage or damage occurs in any of our shipments and in no case will the customer be out any expense if they follow the above instructions.

Be sure to keep all damaged goods subject to examination of the truck or express company inspector, who may call on you some time later. These damaged goods, of course, will belong to them, and they will inform you what to do with them. If you dispose of these damaged goods, your claim may not be paid.

Product Safety Precautions

- ⊗ Never operate the *SHADOW RT* near overhead high voltage power lines. The *SHADOW RT* is manufactured from electrically conductive materials.
- ⊗ Do not use the *SHADOW RT* for uses other than its' intended purpose.
- ⊗ Do not move emergency vehicle with the light extended. Visually verify that the light is completely nested before moving vehicle.
- ⊗ Do not change light position while people are located within its' operating envelope. There are numerous pinch points that can cause serious bodily injury.
- ⊗ Disconnect power at the generator distribution panel before servicing the unit.
- ⊗ Do not use a high-pressure washer or subject the light to high volumes of water when cleaning.
- ⊗ Never use the *SHADOW RT* as a lifting device or mobile arm.
- ⊗ Do not use a *SHADOW RT* that has been damaged or is not fully functional.
- ⊗ Never hold any part of the *SHADOW RT* with a hand or foot while it is in motion.
- ⊗ Keep loose clothing, hands and feet clear of moving parts.
- ⊗ The *SHADOW RT* is not intended to be operated while the vehicle is in motion.



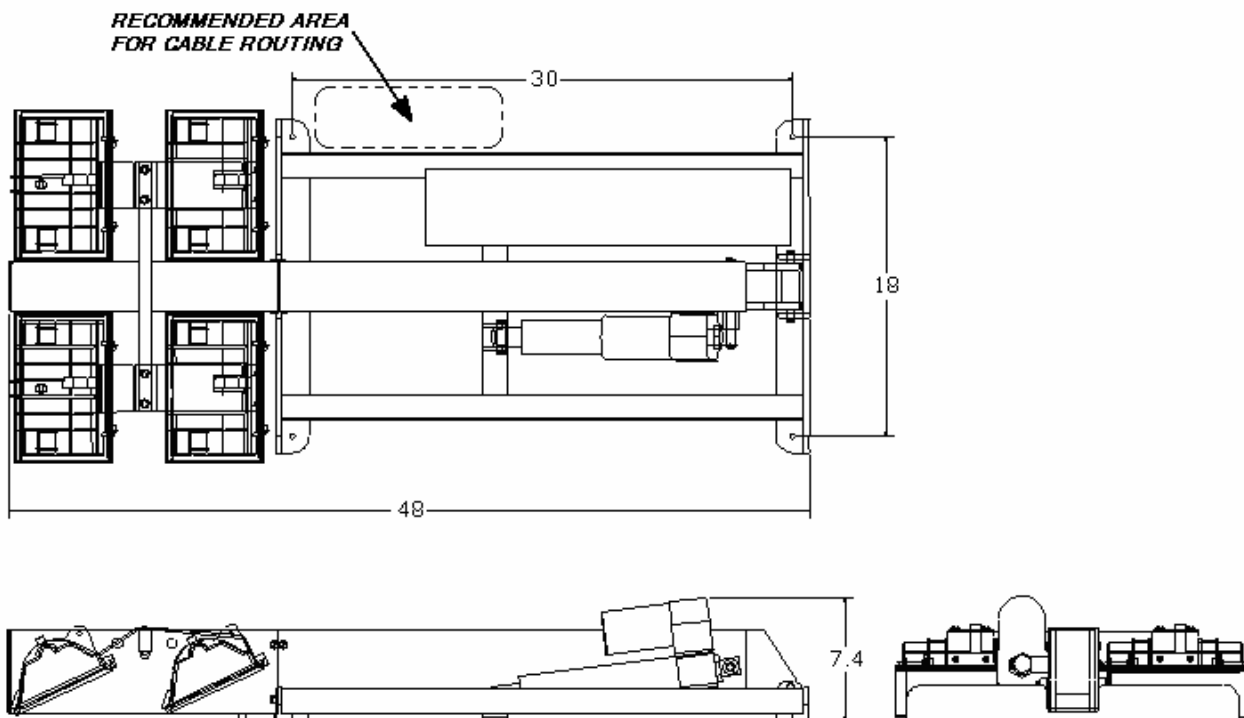
Installation Requirements

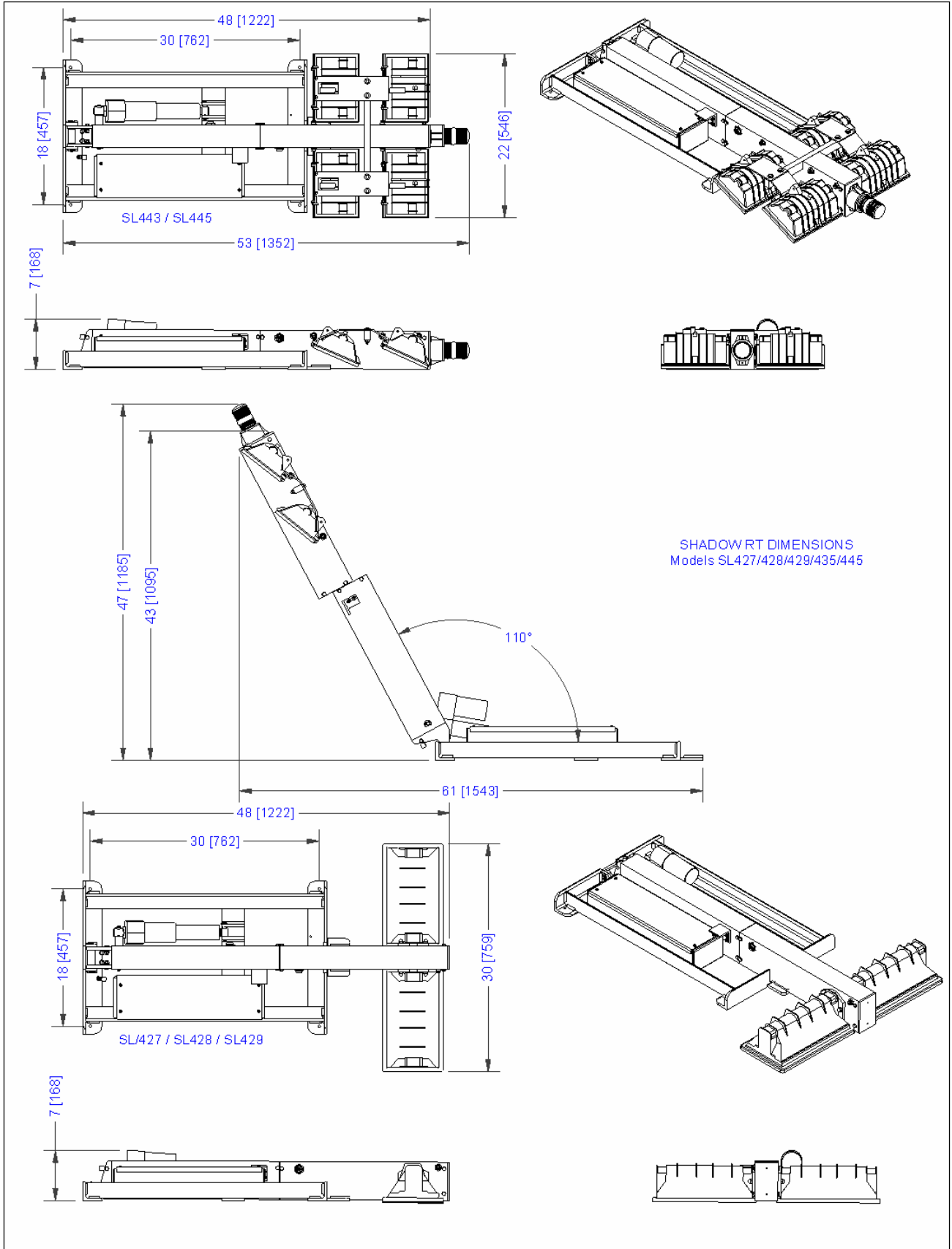
The SHADOW RT must be installed by a designated facility by qualified personnel only. All safety precautions must be thoroughly understood before installation. Please consult the factory for additional installation information or assistance at 1-800-797-7974.

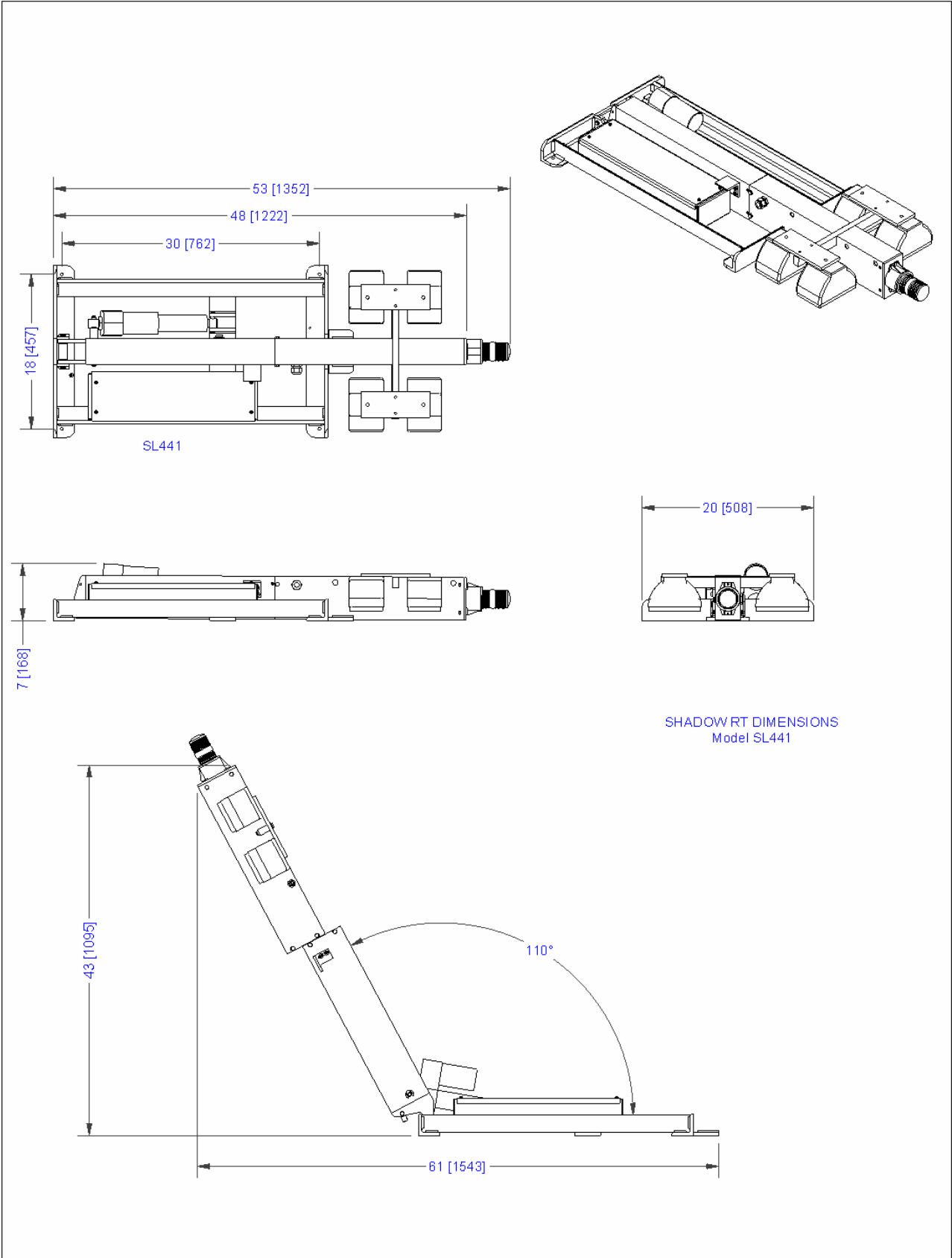
Refer to the drawing below to determine the location of the required (4) mounting hole locations. The *SHADOW RT* weighs a minimum of 70 pounds, depending upon lamp configuration. Use assistance to lift the light into position. Drill (4) 5/16" holes to secure lamp to vehicle.

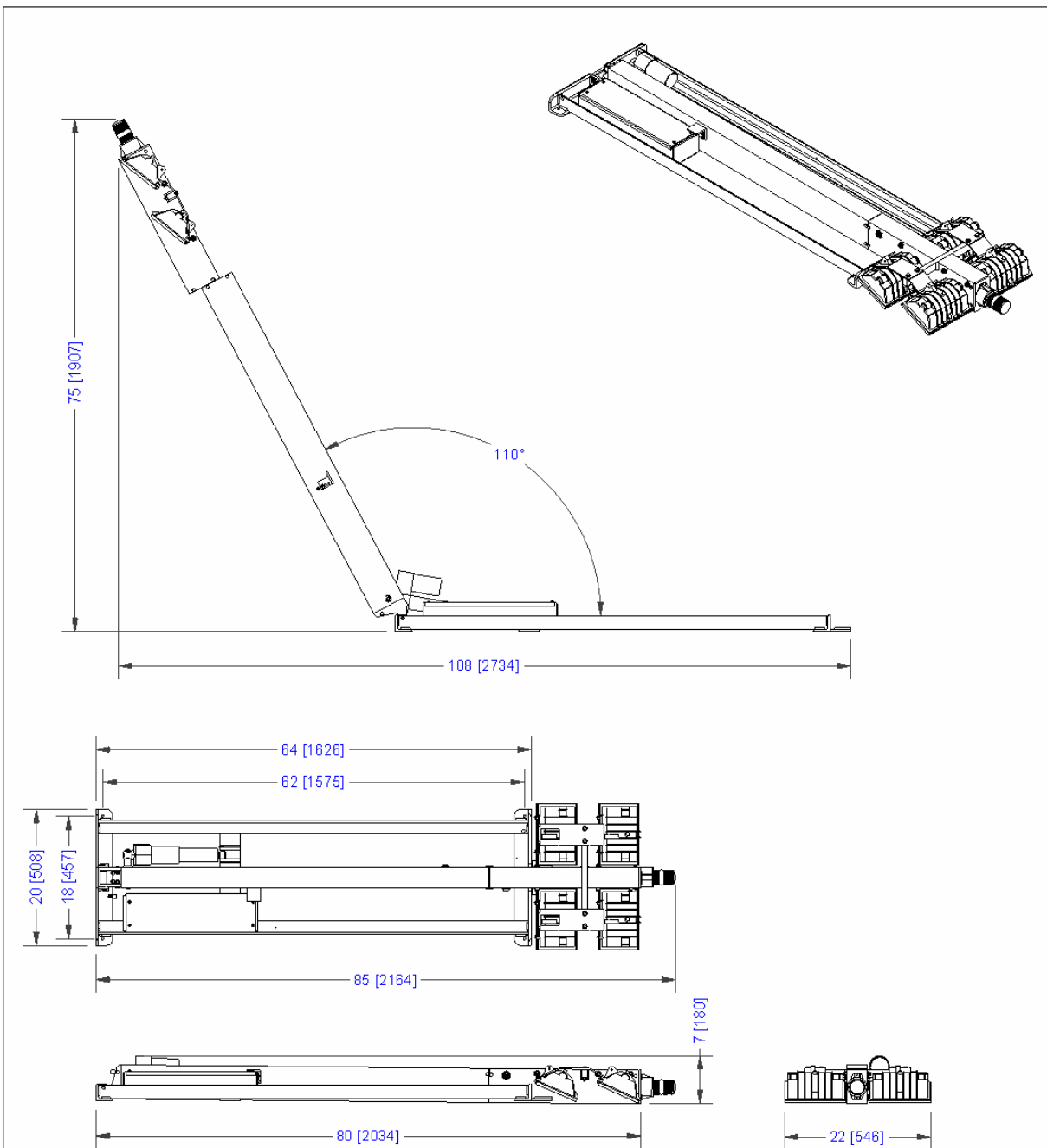
Remove any obstructions below the mounting surface such as headliners. Fasten the light using the provided hardware. When routing the connecting electric wires use care to avoid sharp bends, hot surfaces or other hazards to the wire.

Dimensions depicted below are for a SL445 standard unit.

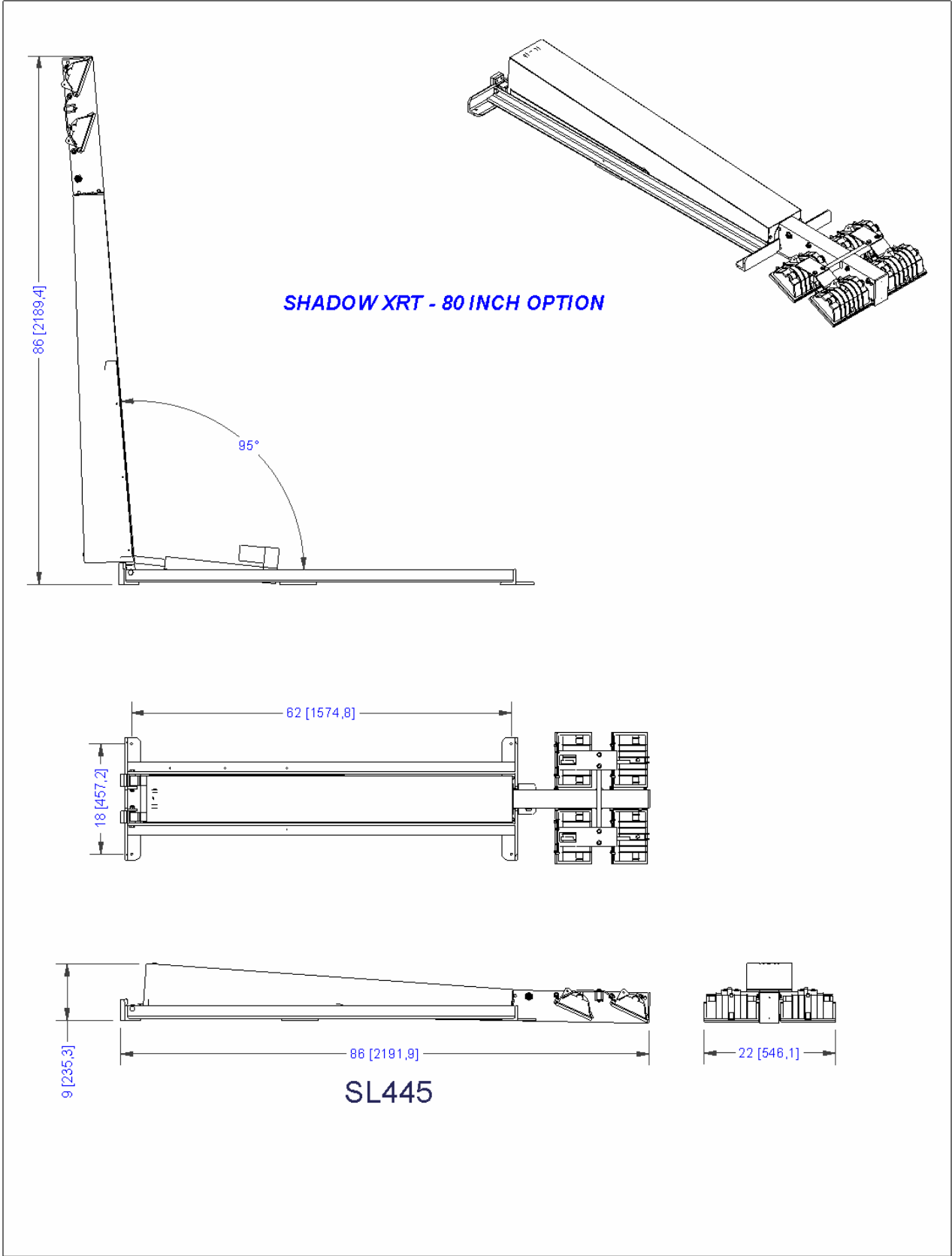




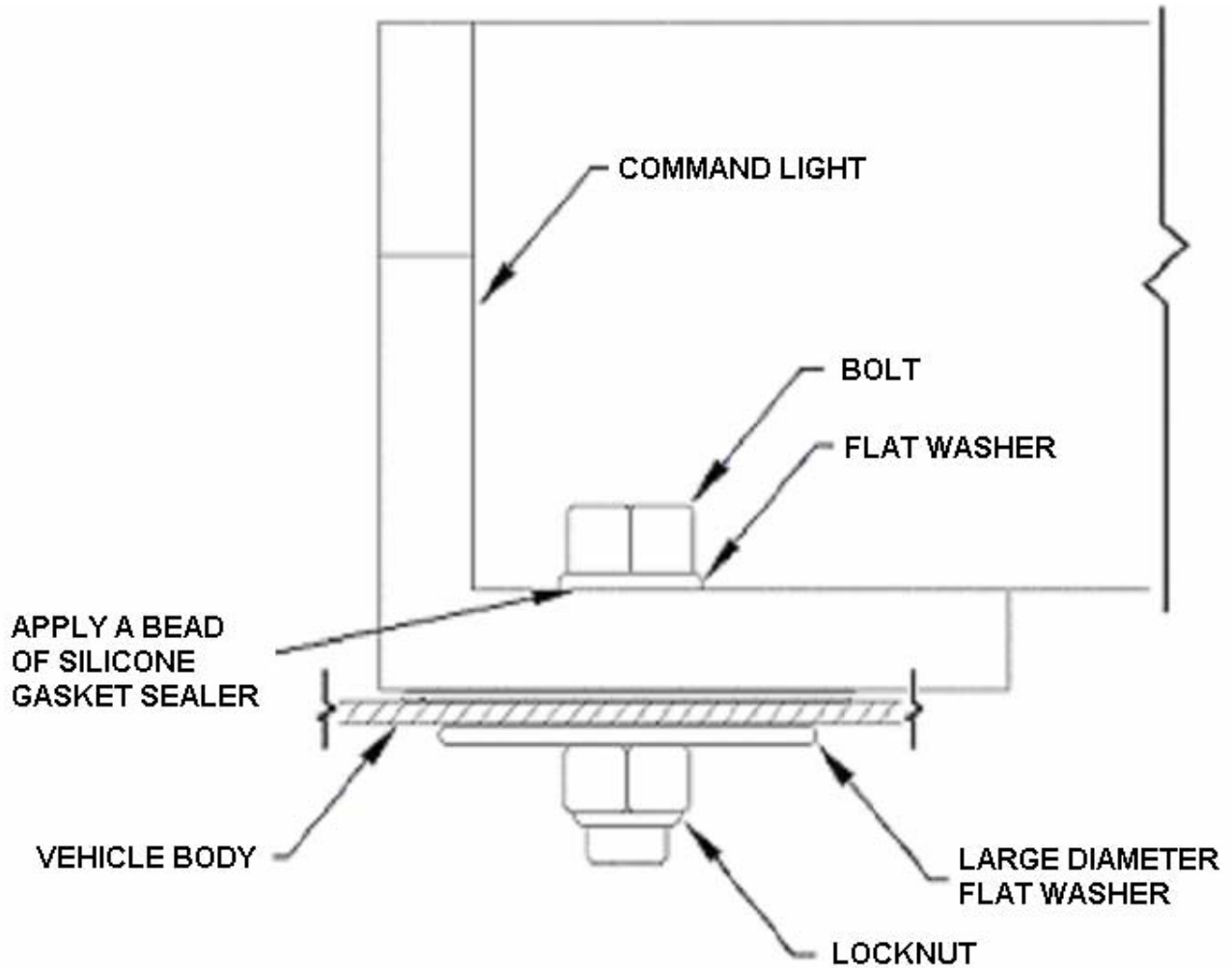




MATERIAL		QUANTITY	
COMMAND LIGHT			
TITLE SL445RT - 80 Inch			REV
FILENAME SL4xx-RT_EXT.idw			
REFERENCE D:\assemblies\CLights\shadow_RT\SL4xx-RT_EXT.tbl			
UNLESS NOTED: ALL DIMENSIONS ARE IN INCHES SCALE 1:1 DO NOT SCALE DRAWING TOLERANCES: LINEAR ±.015 ANGLE 5° HOLES ±.015 - .000 - .8 BREAK ALL EDGES/CORNERS			
DATE 8/18/2004	DRAWN skrobe	SIZE A	SHEET 1 OF 1



To assure a weather tight installation apply a bead of silicone based gasket sealer to the underside of the mounting holes and bolt heads.



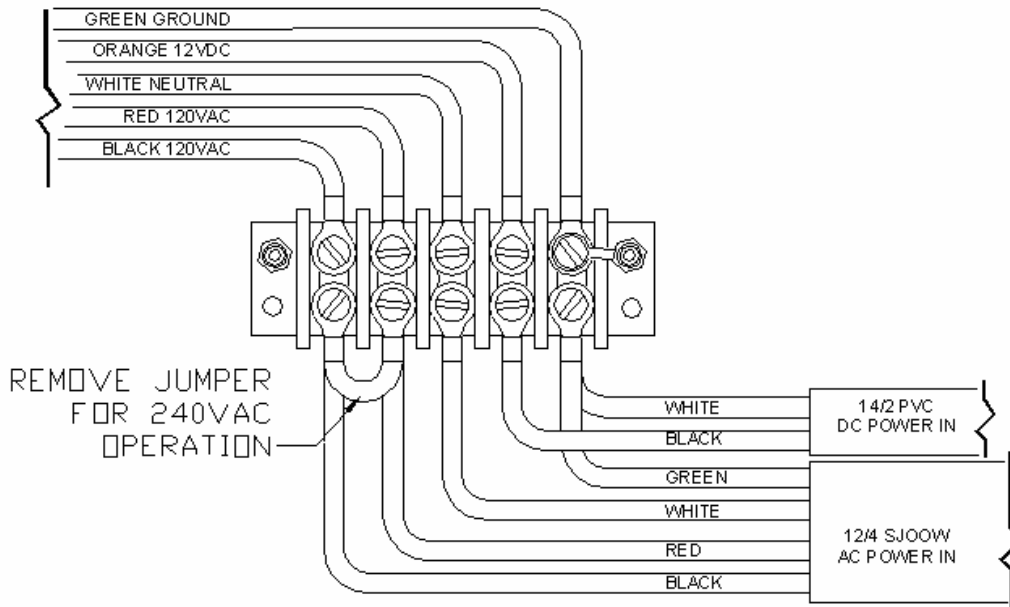
Electrical Wiring

SHADOW RT control wires are routed through (2) self-sealing connectors. To install, drill (2) 7/8" diameter holes on 2-1/2" centers. Apply silicone sealer to underside of connector before inserting into hole. Fasten connector securely with nuts. Run the control wires from the *SHADOW RT* through the vehicle and connect to the control box.

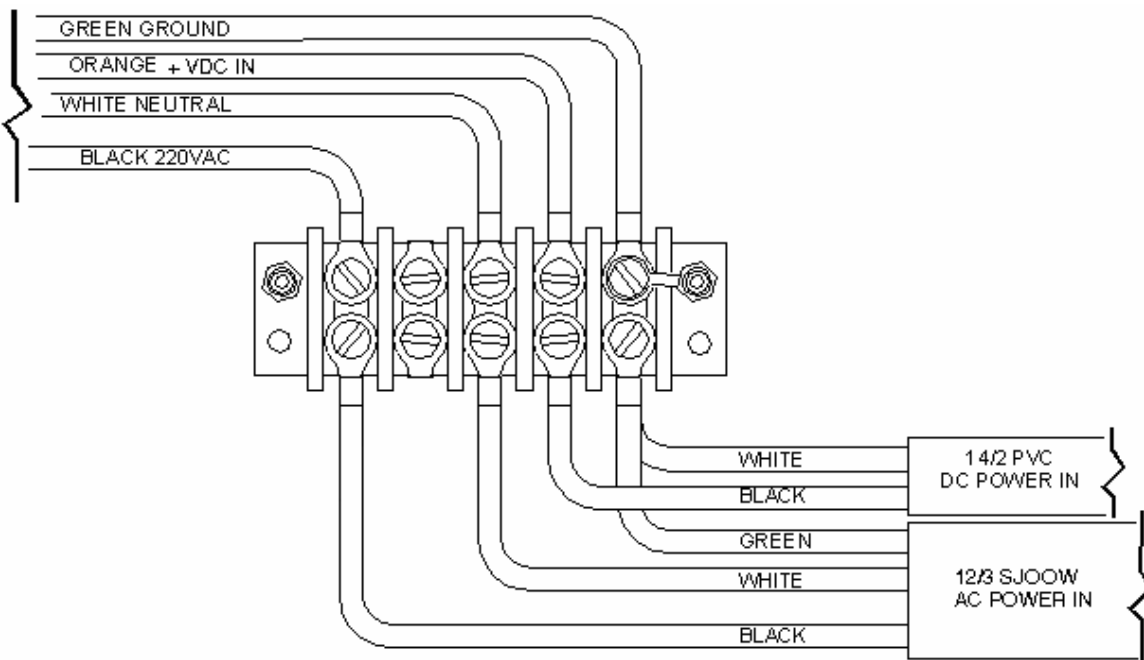
Power Connections

Make power connections to the control box as illustrated below. Be sure to provide adequate safety fusing for all power connections.

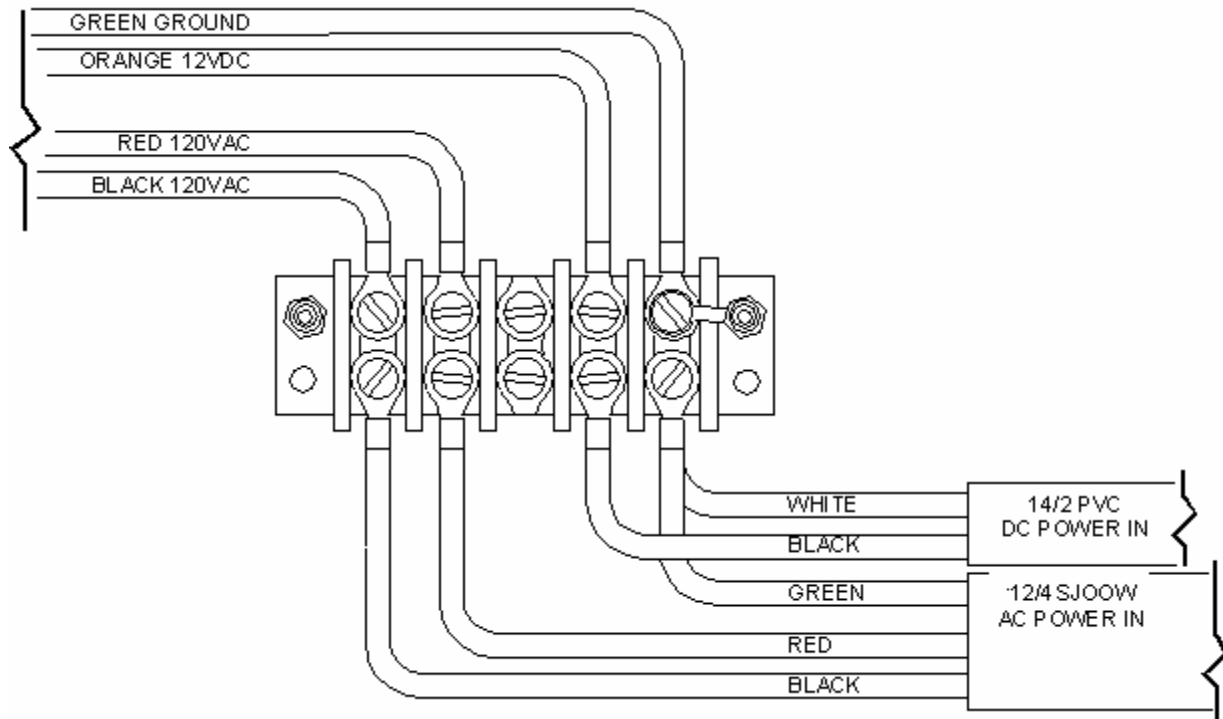
SL 435 / SL445 / SL447



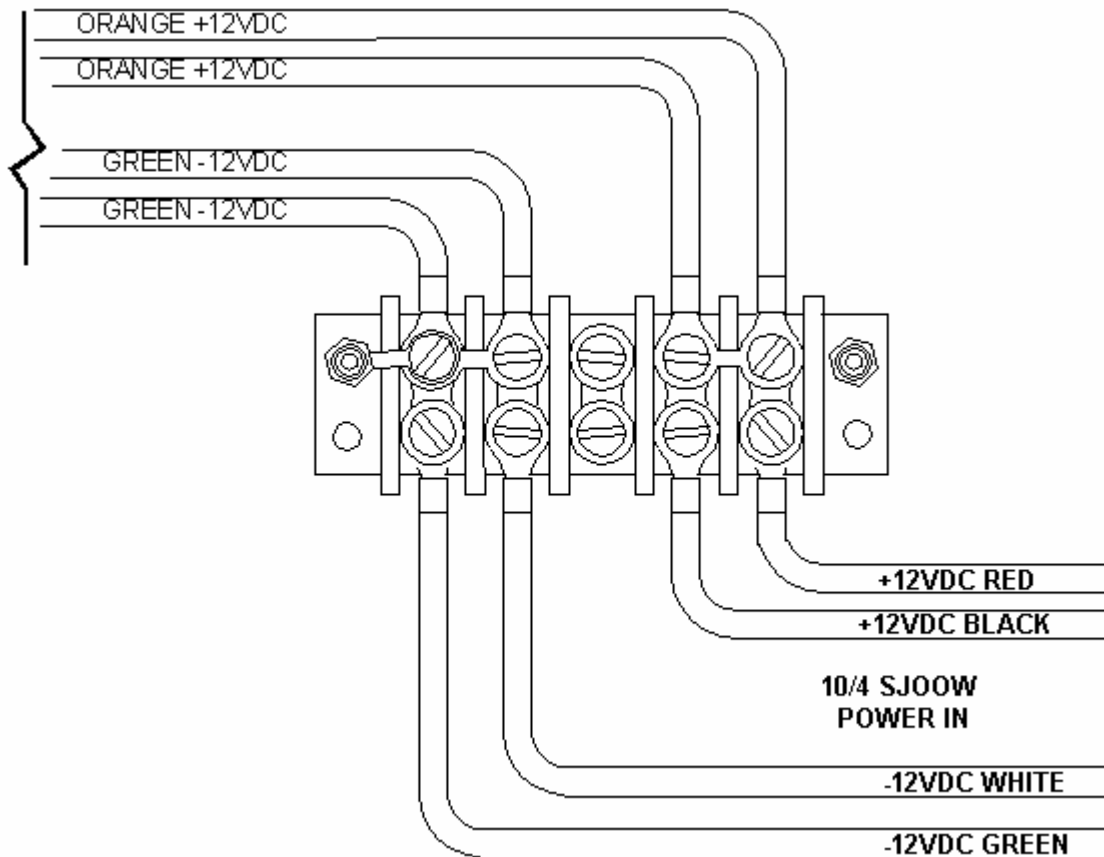
SL445 220VAC EURO / 12VDC / 24VDC



SL427 / SL428/ SL429



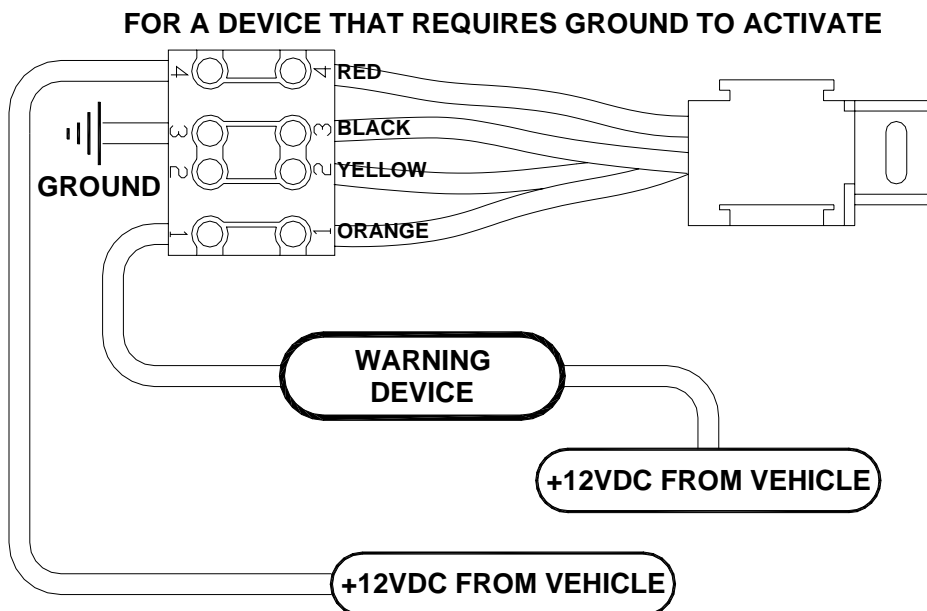
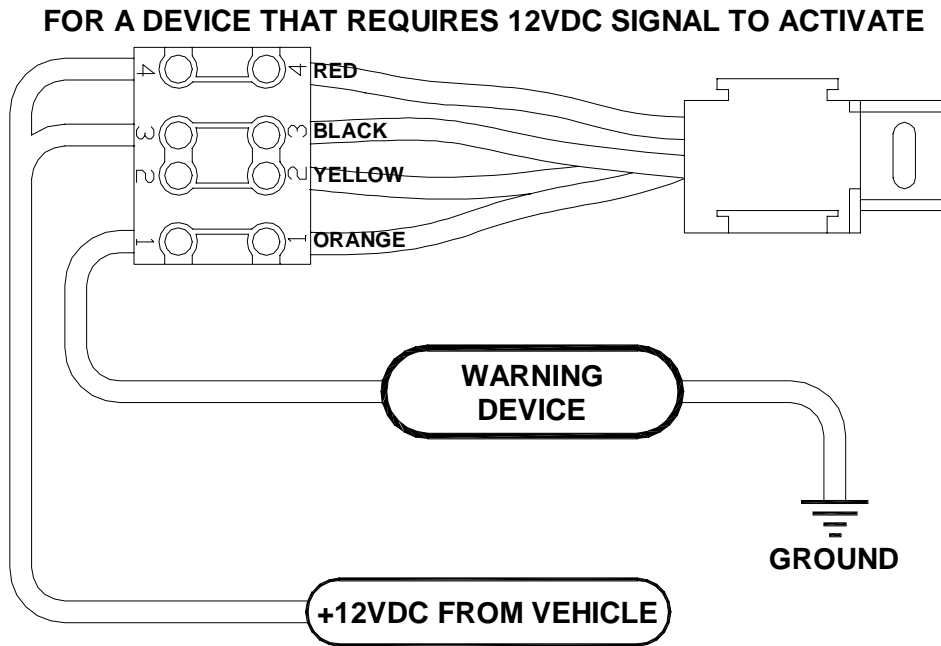
SL441



Warning Device Installation

The nest sensor can be used to activate a warning device when the light is extended. Typically, the vehicle will have a light or buzzer that actuates when the compartment doors are open. To connect such a device determine whether it is activated when it receives 12 VDC or when it receives a path to ground.

The connector for hooking up a warning device is located in the holster box that holds the control unit.



Maintenance

Lamp Replacement

SL443/445/428/429

Tools required:

Clean oil-free cloth

Cleaning alcohol

#2 Phillips head screw driver

Position lamp tree so lamps are readily accessible.

Disconnect the power supply from the **SHADOW RT**.

Caution: Allow sufficient time for bulb to cool. The surrounding metal lamp housings can cause serious burns.

Grasp the lamp lens bezel firmly, release the latch that holds the lamp bezel in place. Model SL428/429 have two latches per lamp unit. Models SL443/445 have one screw latch per lamp unit. Use caution, the lamp bezel and lens may fall if not properly grasped.

Do not touch the lamp directly. Use a clean oil-free towel to handle the lamp. The lamps operate at high temperatures. Handling the lamps directly leaves trace amounts of skin oils that cause localized hot spots that can lead to early lamp failure. Lamp surfaces may be cleaned with alcohol.

The reflector is stamped with instructions indicating which end of the bulb to insert first.

Latch the bezel making sure that the weather stripping is properly fitted.

Cleaning

The **SHADOW RT** is constructed with corrosion resistant aluminum and stainless steel fasteners. To further enhance corrosion resistance all exposed surfaces receive a powder coated paint finish. To assure years of trouble free service periodically clean all external surfaces with a mild detergent solution and a gentle spray of water. Do not use a high-pressure washer, which will force water into sensitive electric circuitry.

Lamp lenses may be cleaned with any commercially available glass cleaner.

Actuator is a sealed unit and does not require adjustment or lubrication.

Periodic cleaning of all pivot points on the **SHADOW RT** with a moisture displacing cleaner and soft bristle brush, without disassembly, to remove accumulated dirt and debris will minimize wear.

Technical Specifications SL427

Dimensions:

	Height	Length	Width
Retracted	7½"	48"	30"
Extended	48"		

Weight:

70 pounds

Lamp Current Draw / Power Requirements:

	Max @ 240 VAC	Generator Requirement
(2) 900 watt	8 amps	2Kw minimum

Actuator Current Draw / Fuse Requirement

14 amp @ 12 VDC full load
12 seconds to full actuator extension

Relay Protection Requirement

Protect with a maximum of 240VAC 15 amp 2-pole circuit breaker.

Technical Specifications SL428

Dimensions:

	Height	Length	Width
Retracted	7½"	48"	30"
Extended	48"		

Weight:

70 pounds

Lamp Current Draw / Power Requirements:

	Max @ 240 VAC	Generator Requirement
(2) 1000 watt	9 amps	2Kw minimum

Actuator Current Draw / Fuse Requirement

14 amp @ 12 VDC full load
12 seconds to full actuator extension

Relay Protection Requirement

Protect with a maximum of 240VAC 15 amp 2-pole circuit breaker.

Technical Specifications SL429

Dimensions:

	Height	Length	Width
Retracted	7½"	48"	30"
Extended	48"		

Weight:

70 pounds

Lamp Current Draw / Power Requirements:

	Max @ 240 VAC	Generator Requirement
(2) 1500 watt bulbs	14 amps	3Kw minimum

Actuator Current Draw / Fuse Requirement

14 amp @ 12 VDC full load
12 seconds to full actuator extension

Relay Protection Requirement

Protect with a maximum of 240VAC 15 amp 2-pole circuit breaker.

Technical Specifications SL443

Dimensions:

	Height	Length	Width
Retracted	7½"	48"	22"
Extended	48"		

Weight:

70 pounds

Lamp Current Draw / Power Requirements:

	Max @ 110 VAC	Generator Requirement
(4) 350 watt bulbs	13 amps	2Kw minimum

Actuator Current Draw / Fuse Requirement

14 amp @ 12 VDC full load
12 seconds to full actuator extension

Relay Protection Requirement

Protect with a maximum of 110VAC 15 amp 2-pole circuit breaker.

Technical Specifications SL441

Dimensions:

	Height	Length	Width
Retracted	7½"	48"	22"
Extended	48"		

Weight:

70 pounds

Lamp Current Draw / Power Requirements:

	Max @ 12 VDC
(8) 55 watt bulbs 2 per lamp head	36 amps

Actuator Current Draw / Fuse Requirement

14 amp @ 12 VDC full load

12 seconds to full actuator extension

Technical Specifications SL445

Dimensions:

	Height	Length	Width
Retracted	7½"	48"	22"
Extended	48"		

Weight:

70 pounds

Lamp Current Draw / Power Requirements:

	Max @ 110 VAC	Generator Requirement
(4) 500 watt bulbs	18 amps	2Kw minimum

Actuator Current Draw / Fuse Requirement

14 amp @ 12 VDC full load
12 seconds to full actuator extension

Relay Protection Requirement

Protect with a maximum of 110VAC 15 amp 2-pole circuit breaker.

Technical Specifications SL447

Dimensions:

	Height	Length	Width
Retracted	7½"	48"	22"
Extended	48"		

Weight:

70 pounds

Lamp Current Draw / Power Requirements:

	Max @ 110 VAC	Generator Requirement
(4) 750 watt bulbs	25 amps	3 Kw minimum

Actuator Current Draw / Fuse Requirement

14 amp @ 12 VDC full load
12 seconds to full actuator extension

Relay Protection Requirement

Protect with a maximum of 110VAC 15 amp 2-pole circuit breaker.

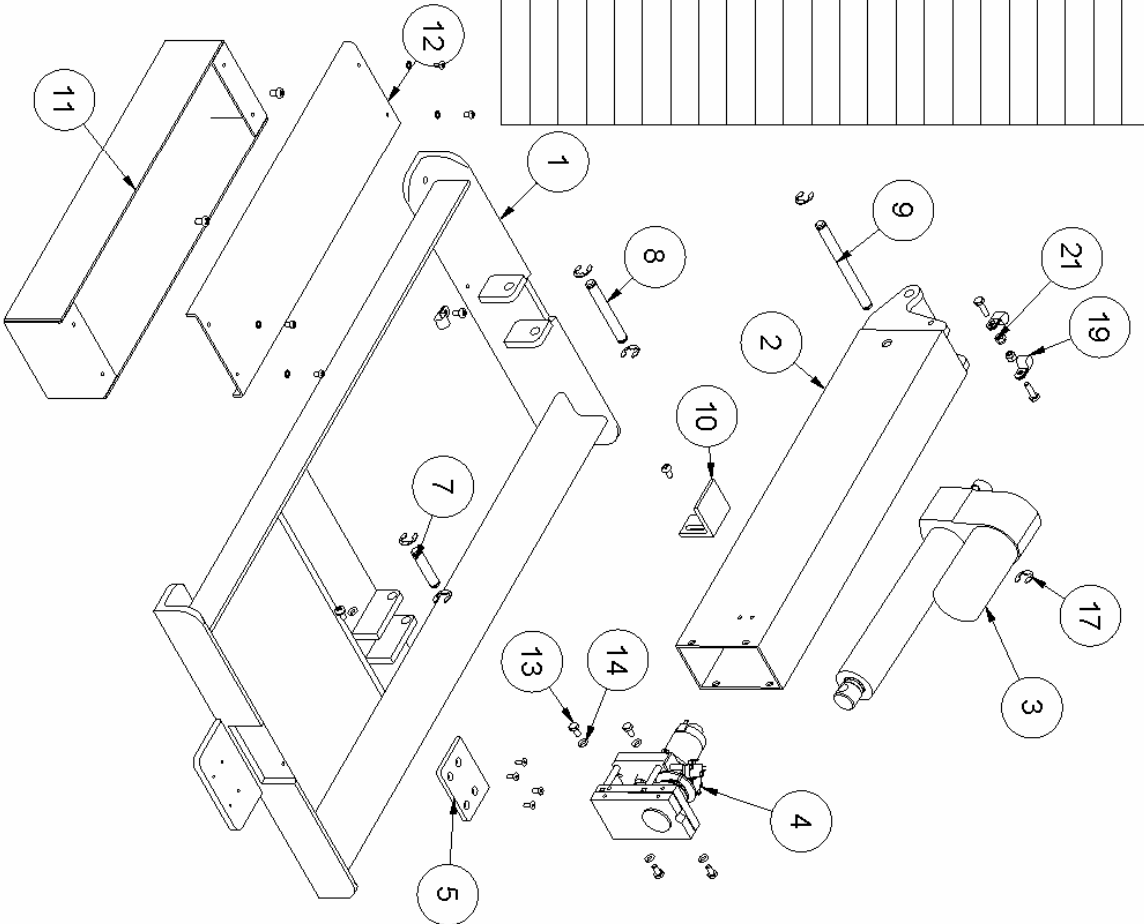
Parts Lists

ITEM	QTY	PART NUMBER	DESCRIPTION
1	1	078-01000A	FRAME, SHADOW,RT, WELDMENT
2	1	078-02000A	ARM, MAIN LIFT, SHADOW,RT, WELDMENT
3	1	069-15355	Actuator, D12.21BS-06HC, 6 INCH, 12V
4	1	See Rotation View	ASSEMBLY, ROTATION, SHADOW RT
5	1	078-01600	PAD, NEST, SHADOW RT
7	1	078-01400	PIN, LOWER, ACTUATOR, SHADOW RT
8	1	078-01500	PIN, LOWER, PIVOT, SHADOW RT
9	1	078-02300	PIN, UPPER, ACTUATOR, SHADOW RT
10	1	078-02400	BRACKET, NEST SWITCH, SHADOW RT
11	1	078-01010	BOX, RELAY, SHADOW RT
12	1	078-01011	COVER, RELAY BOX, SHADOW RT
13	4	STD HARDWARE	1/4-20 x 1/2 Hex Head Cap Screw SS
14	6	STD HARDWARE	Washer, Lock, Spring, Regular, 1/4", SS
17	6	STD HARDWARE	E-Ring, 5133-62, .044T, SS
18	1	069-15350	CONN XALL, MAXICON, 10 PIN, PANEL
19	3	STD HARDWARE	Clp, Insul, 0.5 Closed, 0.281 Hole
21	2	STD HARDWARE	Nut, Nylon, 1/4-20 UNC
22	4	STD HARDWARE	10-24 x 1/2 FHS MS SS
23	5	STD HARDWARE	1/4-20 UNC x 1/2 PHP MS SS
24	2	STD HARDWARE	1/4-20 x 7/8 Hex Head Cap Screw SS
25	4	STD HARDWARE	Washer, Lock, 18-8 SS, Internal, #10
26	4	STD HARDWARE	10-24 UNC x 3/8 PHP MS SS

Parts List

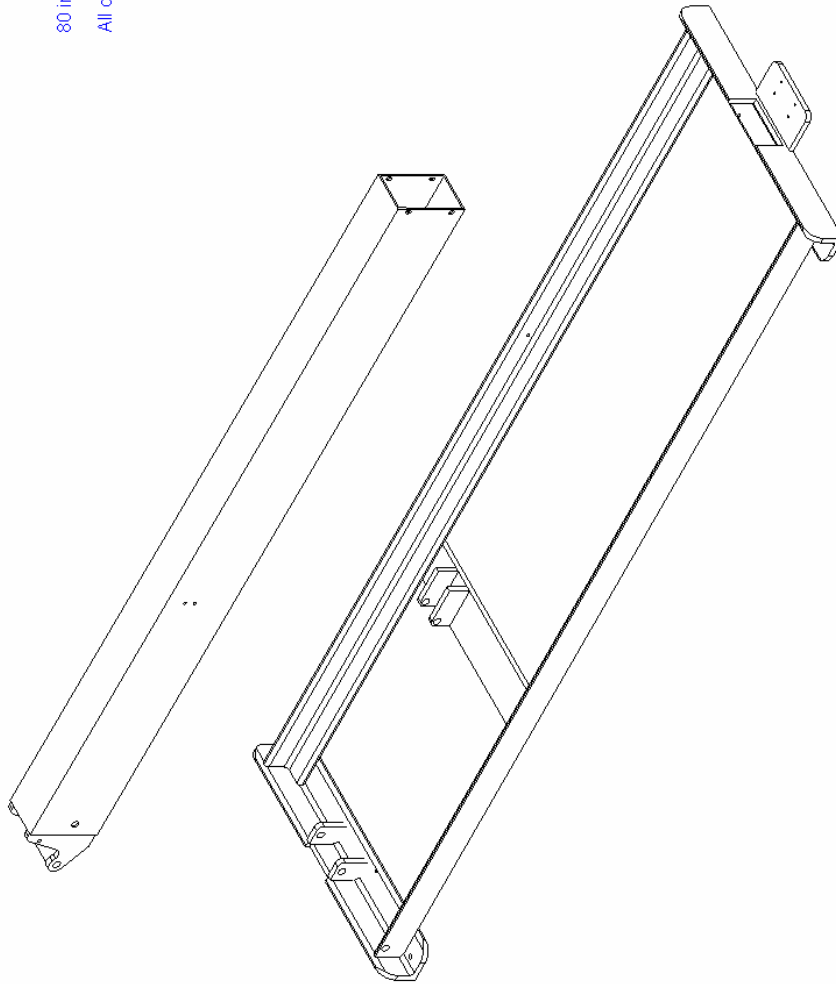
PARTS LIST

TITLE	ASSEMBLY, BASE, SHADOW RT	REV
FILE NAME	SIBASE-RT_EXP.idw	
REFERENCE	W:\data\vac\c\ac_Models\CommandLight\asemblyShadow_Rt\SIBASE-RT.lam UNLESS NOTED, ALL DIMENSIONS ARE IN INCHES. SCALE 1:1. DO NOT SCALE DRAWING TOLERANCES: UNLESS SHOWN ANGLES - HOLES +0.0, -0.00. BREAK ALL EDGES CORNERS DATE 12/22/2004 DRAWN skrbhe SIZE A SHEET 1 OF 1	



Parts List		
ITEM	QTY	DESCRIPTION
1	1	078-01000AE FRAME, SHADOW RT, WELDMENT
2	1	078-02000AE ARM, MAIN LIFT, SHADOW RT, WELDMENT

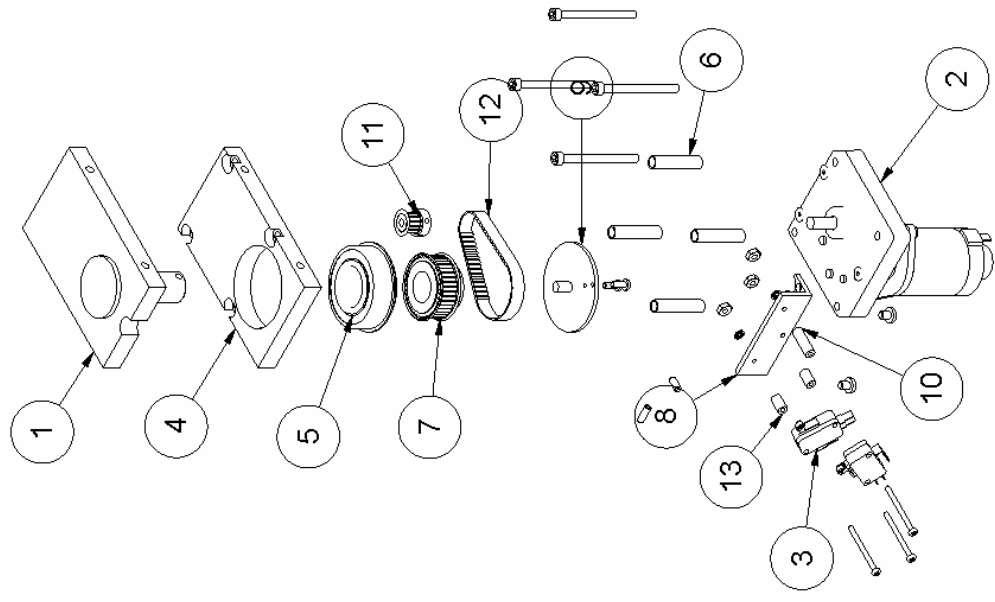
80 inch SHADOW RT option Parts List Addendum
 All other parts are identical to standard SL4xx base assembly



MATERIAL	QUANTITY
COMMAND/LIGHT	
TITLE	REV
ASSEMBLY, BASE, SHADOW RT	
FILENAME	
SL4xx-RT_EXT.idw	
REFERENCE	
D:\vsr\eml\sl4\LightShadow_RT\SL4xx-RT_EXT.idw	
UNLESS NOTED, ALL DIMENSIONS ARE IN INCHES. SCALE: 1:1. DO NOT SCALE DRAWING.	
TOLERANCES: LINEAR ±.015° ANGLE ±° HOLES ±.015-.000 - BREAK ALL EDGES/CORNERS	
DATE 1/22/2004	DRAWN skrote
	SIZE A
	SHEET 2 OF 2

Parts List

ITEM	QTY	PART NUMBER	DESCRIPTION
1	1	078-04000W	WELDMENT, ROTATION, SHADOW RT
2	1	069-14793	MOTOR, ROTATION, 5Z835, SHADOW RT
3	2	069-14222	SWITCH, MICRO, DPST
4	1	078-03001	PLATE, ROTATION DRIVE, SHADOW RT
5	1	069-15330	BEARING, SHIELDED, 7516DLG
6	4	078-03002	STANDOFF, MOTOR, SHADOW RT
7	1	078-03004	PULLEY, DRIVEN, ROTATION, SHADOW RT
8	1	078-03005	BRACKET, SWITCH MOUNT, SHADOW RT
9	1	078-03007	CAM, LIMIT SWITCH, SHADOW RT
10	1	078-03003	SPACER, MICRO SWITCH, SHADOW RT
11	1	069-15369	Pulley, Pitch 3mm, Width 9 mm, Flanged, PA3C14DF090
12	1	069-14794	BELT, TIMING, 1683M09
13	2	078-03009	SPACER, SWITCH, SHADOW RT
14	4	STD HARDWARE	10-32 x 2-1/4 SHCS SS
15	3	STD HARDWARE	4-40 UNC x 1-1/2 PHP MS ZINC
16	2	STD HARDWARE	10-32 UNF x 1/4 PHP MS SS
17	2	STD HARDWARE	6-32 UNC x 3/8 PHP MS ZINC
18	1	STD HARDWARE	8-36 UNF x 3/8 SH Set Screw SS
19	1	STD HARDWARE	8-36 UNF x 1/2 SH Set Screw SS
20	3	STD HARDWARE	Washer, Lock, 18-8 SS, Internal, #4
21	3	STD HARDWARE	Nut, MS, Hex1, 6-32 UNC

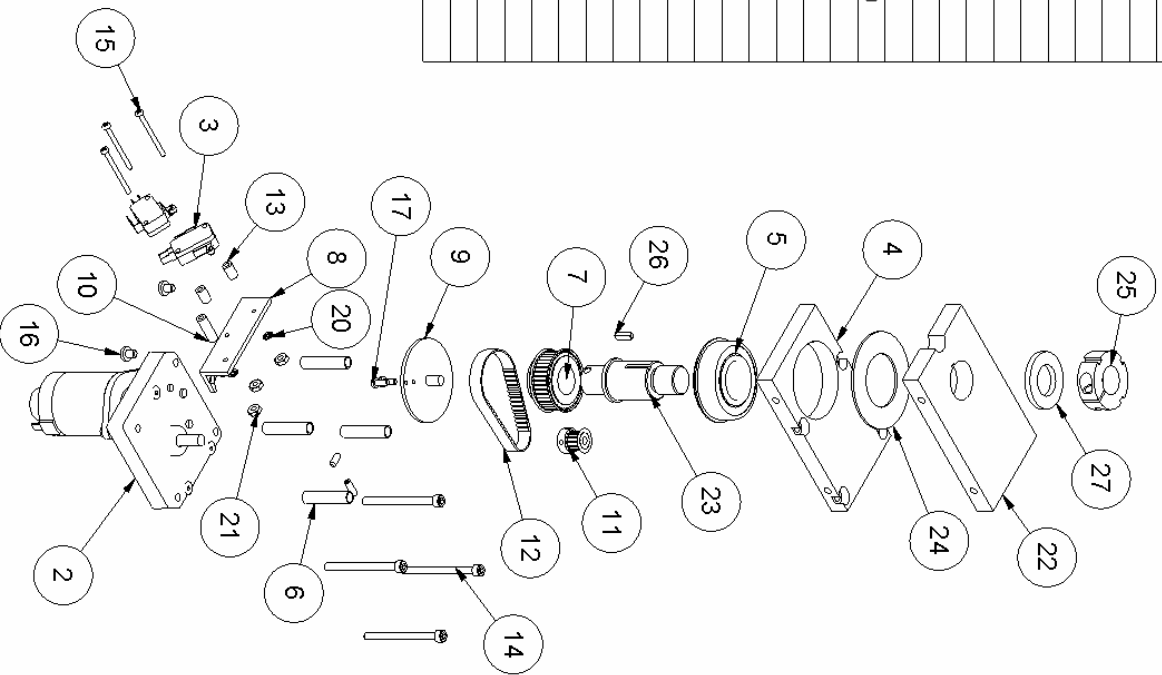


TITLE	REV
ASSEMBLY, ROTATION, SHADOW RT	
FILENAME	
SLRotation.idw	
REFERENCE	
V:\data\MSVACC\AD_Modal\CommandLight\aces embles\Shadow_RT\SLRotation.lam	
UNLESS NOTED: ALL DIMENSIONS ARE IN INCHES SCALE 1:1. DO NOT SCALE DRAWING	
TOLERANCES: LINEAR ±0.15 ANGLE ±5° HOLES +0.015 -0.001 - BREAK ALL EDGES/CORNERS	
DATE 12/22/2004	DRAWN skrob8
	SIZE A SHEET 1 OF 1

ITEM	QTY	PART NUMBER	DESCRIPTION
2	1	069-14793	MOTOR, ROTATION, 52835, SHADOW RT
3	2	069-14222	SWITCH, MICRO, DPST
4	1	078-03001	PLATE, ROTATION DRIVE, SHADOW RT
5	1	069-15330	BEARING, SHIELDED, 7616DLG
6	4	078-03002	STANDOFF, MOTOR, SHADOW RT
7	1	078-03004	PULLEY, DRIVEN, ROTATION, SHADOW RT
8	1	078-03005	BRACKET, SWITCH MOUNT, SHADOW RT
9	1	078-03007	CAM, LIMIT SWITCH, SHADOW RT
10	1	078-03003	SPACER, MICRO SWITCH, SHADOW RT
11	1	PA3014DF090	Pulley, Pitch 3mm, Width 9 mm, Flanged, PA3014DF090
12	1	069-14794	BELT, TIMING, 1883M09
13	2	078-03009	SPACER, SWITCH, SHADOW RT
14	4	STD HARDWARE	10-32 x 2-1/4 SHCS SS
15	3	STD HARDWARE	4-40 UNC x 1-1/2 PHP MS ZINC
16	2	STD HARDWARE	10-32 UNF x 1/4 PHP MS SS
17	2	STD HARDWARE	8-32 UNC x 3/8 PHP MS ZINC
18	1	STD HARDWARE	8-38 UNF x 3/8 SH Set Screw SS
19	1	STD HARDWARE	8-38 UNF x 1/2 SH Set Screw SS
20	3	STD HARDWARE	Washer, Lock, 18-8 SS, Internal, #4
21	3	STD HARDWARE	Nut, MS, Hex1, 8-32 UNC
22	1	078-04014	PLATE, DRIVEN, ROTATION, SHADOW RT
23	1	078-04013	SPINDLE, ROTATION, DRIVEN, SHADOW RT
24	1	078-04021	SPACER, ROTATION, TEFLON, SHADOW RT
25	1	065-12808	CLAMP, NUT, 3/4-18
26	1	075-06400	KEY, SQUARE, .125 X .500
27	1	STD HARDWARE	Washer, Flat, SAE, 3/4", SS

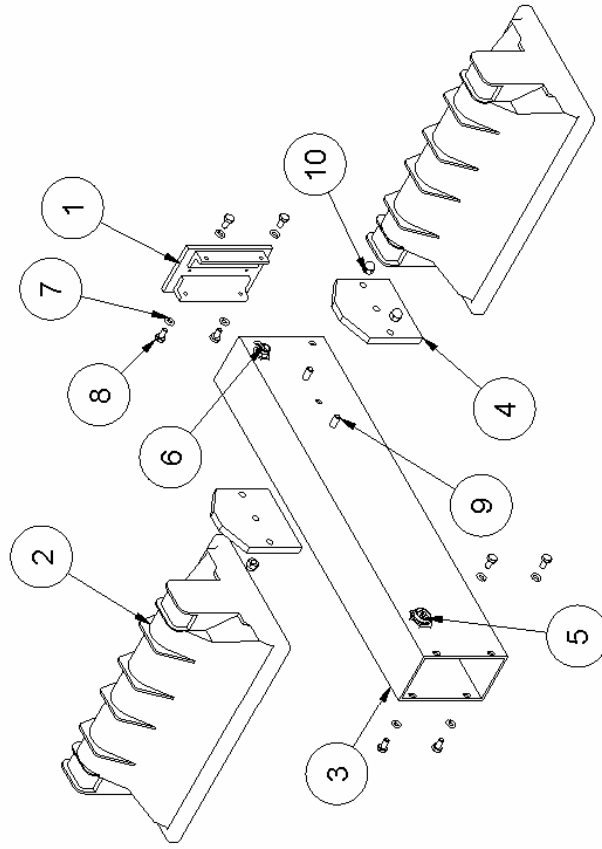
Parts List

TITLE	ASSEMBLY, ROTATION, SHADOW RT	REV
FILENAME	SLRotation_ECO_1.idw	
REFERENCE	C:\000_FIN\CAD_M009\COMB101\GIVEFFR\BUMP\SHADOW_RT\SLRODRW_1_ECO_1.BR	
UNLESS NOTED, ALL DIMENSIONS ARE IN INCHES - SCALE 1:1 - DO NOT SCALE DRAWING		
TOLERANCES: LINEAR= .010 ANGLE= .5		
DATE	12/22/2004	
DRAWN	SK008	
SIZE	A	
SHEET	1	OF 1



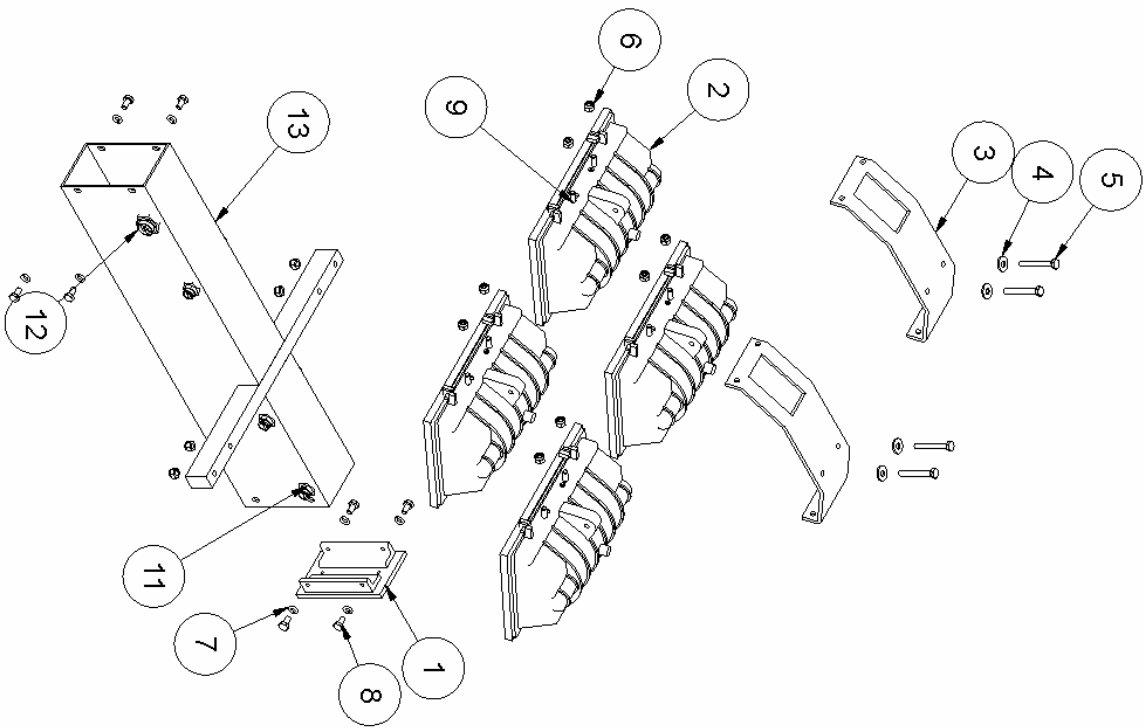
Parts List

ITEM	QTY	PART NUMBER	DESCRIPTION
1	1	078-5210W	MOUNT, STROBE, SHADOW RT, WELDMENT
2	2	611-615-Lamp	
3	1	078-05002	TREE, LAMP, HUBBLE, SHADOW RT
4	2	078-06080	SPACER, 1500W LAMP, SHADOW RT
5	1	069-15347	CONXALL, MAXICON, 7 PIN, PANEL
6	1	069-15352	CONXALL, MINICON, 2 PIN, PANEL
7	8	STD HARDWARE	Washer, Lock, Spring, Regular, 1/4", SS
8	8	STD HARDWARE	1/4-20 x 1/2 Hex Head Cap Screw SS
9	4	STD HARDWARE	5/16-18 x 3/4 Hex Head Cap Screw SS
10	4	STD HARDWARE	Nut Acom, 5/16-18 UNC, SS



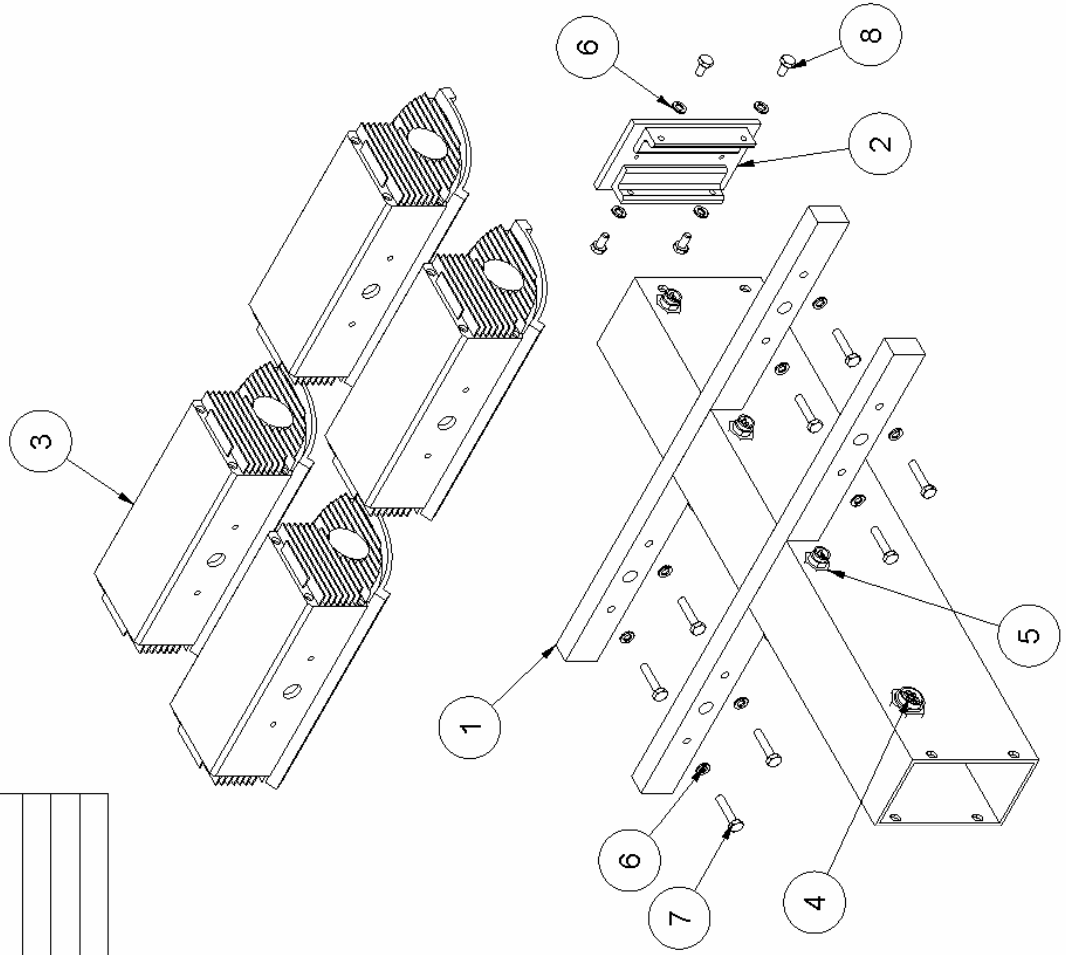
TITLE	REV
TREE, LAMP, 1500W, SHADOW RT	
FILENAME	
LampTree-SL429.idw	
REFERENCE	
W:\abam\SV\AC\A0_Mod\del\CommandLight\Ass emb\blast\Shadow_RT\LampTree-SL429.lam	
UNLESS NOTED: ALL DIMENSIONS ARE IN INCHES: SCALE 1:1 DO NOT SCALE DRAWING	
TOLERANCES: LINEAR ±.015 ANGLE ±.015 ° HOLES ±.015 -BREAK ALL EDGES/CORNERS	
DATE 1/3/2005	
DRAWN sk0bc	SIZE A SHEET 1 OF 1

Parts List			
ITEM	QTY	PART NUMBER	DESCRIPTION
1	1	078-5210W	MOUNT, STROBE, SHADOW RT, WELDMENT
2	4	069-15332-LAMP	LAMP, ASSEMBLY, COMPLETE, 500W
3	2	078-05301	MOUNT, LAMP, SHADOW RT
4	4	STD HARDWARE	Washer, Flat, USS, 1/4", SS
5	4	STD HARDWARE	1/4-20 x 2 Hex Head Cap Screw SS
6	12	STD HARDWARE	Nut, Nylock, 1/4-20 UNC
7	8	STD HARDWARE	Washer, Lock, Spring, Regular, 1/4", SS
8	8	STD HARDWARE	1/4-20 x 1/2 Hex Head Cap Screw SS
9	8	STD HARDWARE	Nut, Hex, Jam, 1/4-20 UNC
11	5	069-15352	CONXALL, MINICON, 2 PIN, PANEL
12	1	069-15347	CONXALL, MAXICON, 7 PIN, PANEL
13	1	078-05001W	TREE, LAMP, WELDMENT, SL445
16	8	STD HARDWARE	1/4-20 x 7/8 Hex Head Cap Screw SS



TITLE	REV
TREE, LAMP, 500W, SHADOW RT	
FILENAME	
LampTree-SL445.idw	
REFERENCE	
W:\data\sva\acc\ad_Models\Command\light\assemblies\Shadow_RT\LampTree-SL445.lam	
UNLESS NOTED: ALL DIMENSIONS ARE IN INCHES SCALE 1:1 DO NOT SCALE DRAWING	
TOLERANCES: LINEAR ±.015 ANGLE 9° HOLES ±.015 - .000 - BREAK ALL EDGES/CORNERS	
DATE 11/9/2005	DRAWN sktobe
	SIZE A
	SHEET 1
	OF 1

Parts List			
ITEM	QTY	PART NUMBER	DESCRIPTION
1	1	078-05003W	TREE, LAMP, WELDMENT, SL447
2	1	078-5210W	MOUNT, STROBE, SHADOW RT, WELDMENT
3	4	FRC-OPC100	CONXALL, MAXICON, 7 PIN, PANEL
4	1	068-15347	CONXALL, MINICON, 2 PIN, PANEL
5	5	068-15352	Washer, Lock, Spring, Regular, 1/4", SS
6	12	STD HARDWARE	1/4-20 x 1-1/4 Hex Head Cap Screw SS
7	8	STD HARDWARE	1/4-20 x 1/2 Hex Head Cap Screw SS
8	4	STD HARDWARE	



TITLE	REV
FILE NAME	
LampTree-SL447.idw	
REFERENCE	
W:\abam\SV\AC\0_0_Modell\CommandLight\Ass emb\blast\Shadow_RT\LampTree-SL447.lam	
UNLESS NOTED: ALL DIMENSIONS ARE IN INCHES: SCALE 1:1 DO NOT SCALE DRAWING	
TOLERANCES: LINEAR ±0.15 ANGLE ±5° HOLES ±0.15 BREAK ALL EDGES/CORNERS	
DATE 1/18/2005	
DRAWN SK08c	SIZE A SHEET 1 OF 1

Parts List			
ITEM	QTY	PART NUMBER	DESCRIPTION
1	1	078-5210W	MOUNT, STROBE, SHADOW RT, WELDMENT
2	4	STD HARDWARE	Washer, Flat, USS, 1/4", SS
3	4	STD HARDWARE	1/4-20 x 2 Hex Head Cap Screw SS
4	4	STD HARDWARE	Nut, Nylock, 1/4-20 UNC
5	8	STD HARDWARE	Washer, Lock, Spring, Regular, 1/4", SS
6	8	STD HARDWARE	1/4-20 x 1/2 Hex Head Cap Screw SS
7	5	069-15352	CONXALL, MINICON, 2 PIN, PANEL
8	1	078-05001W	TREE, LAMP, WELDMENT, SL445
9	2	078-05302	MOUNT, LAMP, HELLA, SHADOW RT
10	4	069-14230	LAMP, ASSEMBLY, COMPLETE, 55w
11	1	3-4NPT_STRAIGHT_SEALCON	SEALCON, STRAIGHT, 1/2 NPT

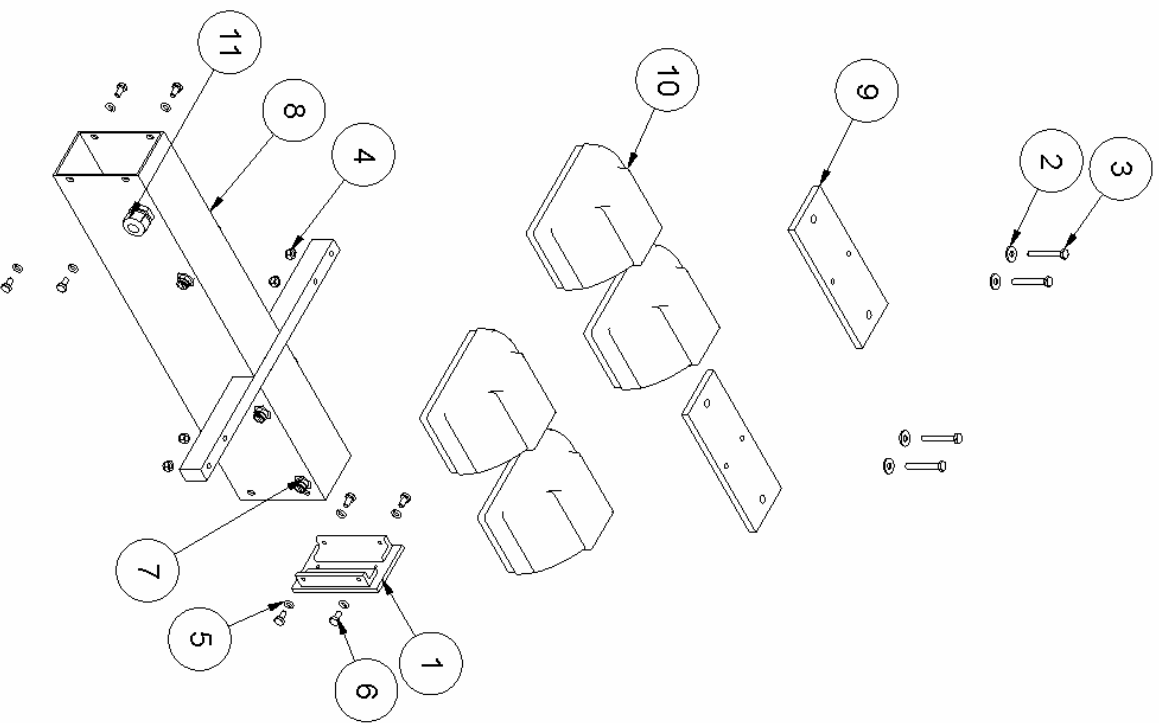
TITLE
TREE, LAMP, 55W, SHADOW RT
 REV

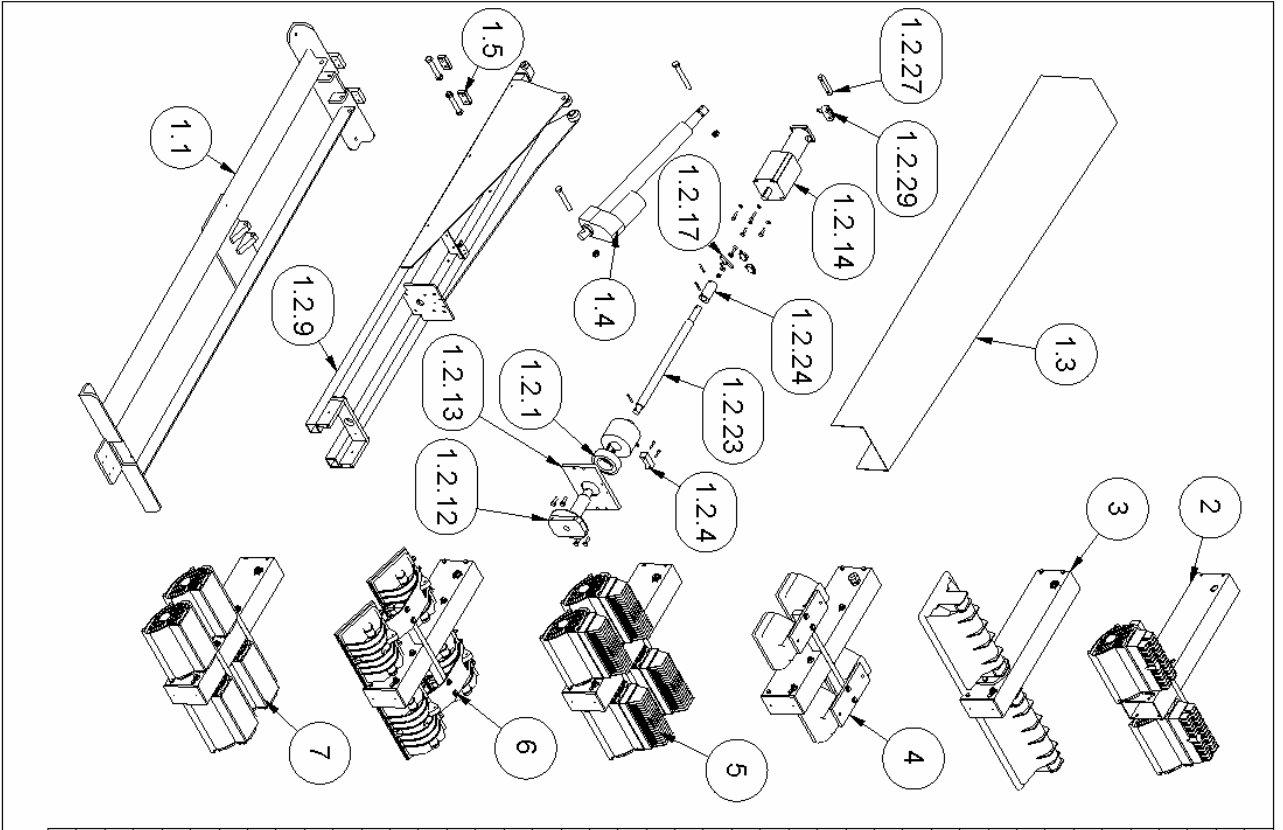
FILENAME
LampTree-SL441.idw

REFERENCE
 V:\data\sv\ac\40_model\c\command\digital\kess\assemblies\shadow_FT\LampTree_SL441.ipt

UNLESS NOTED, ALL DIMENSIONS ARE IN INCHES SCALE 1:1 DO NOT SCALE DRAWING
 TOLERANCES: LINEAR ±0.15 ANGLE ±0.5° BREAK ALL EDGES CORNERS

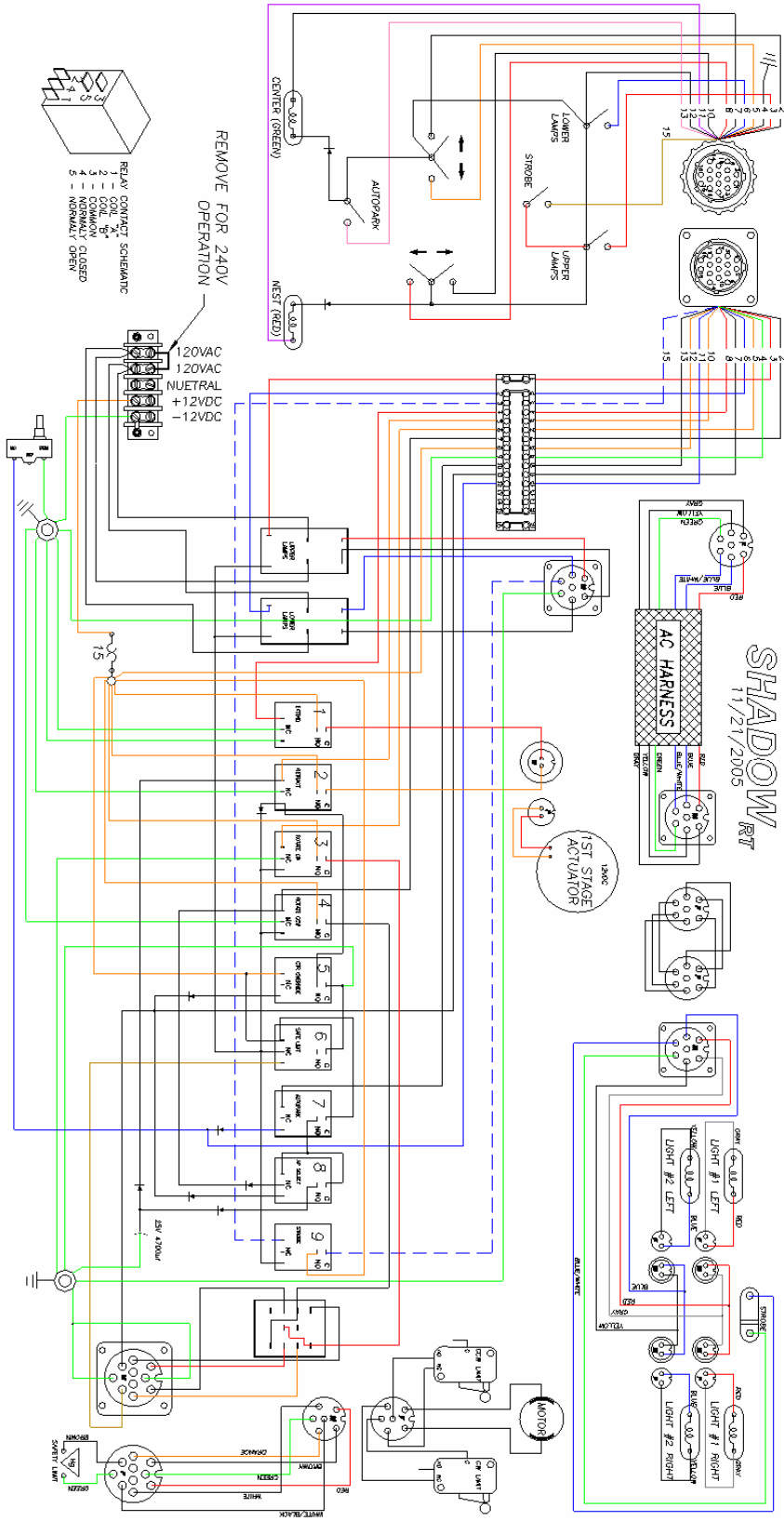
DATE 1/3/2005 DRAWN sk00b SIZE A SHEET 1 OF 1

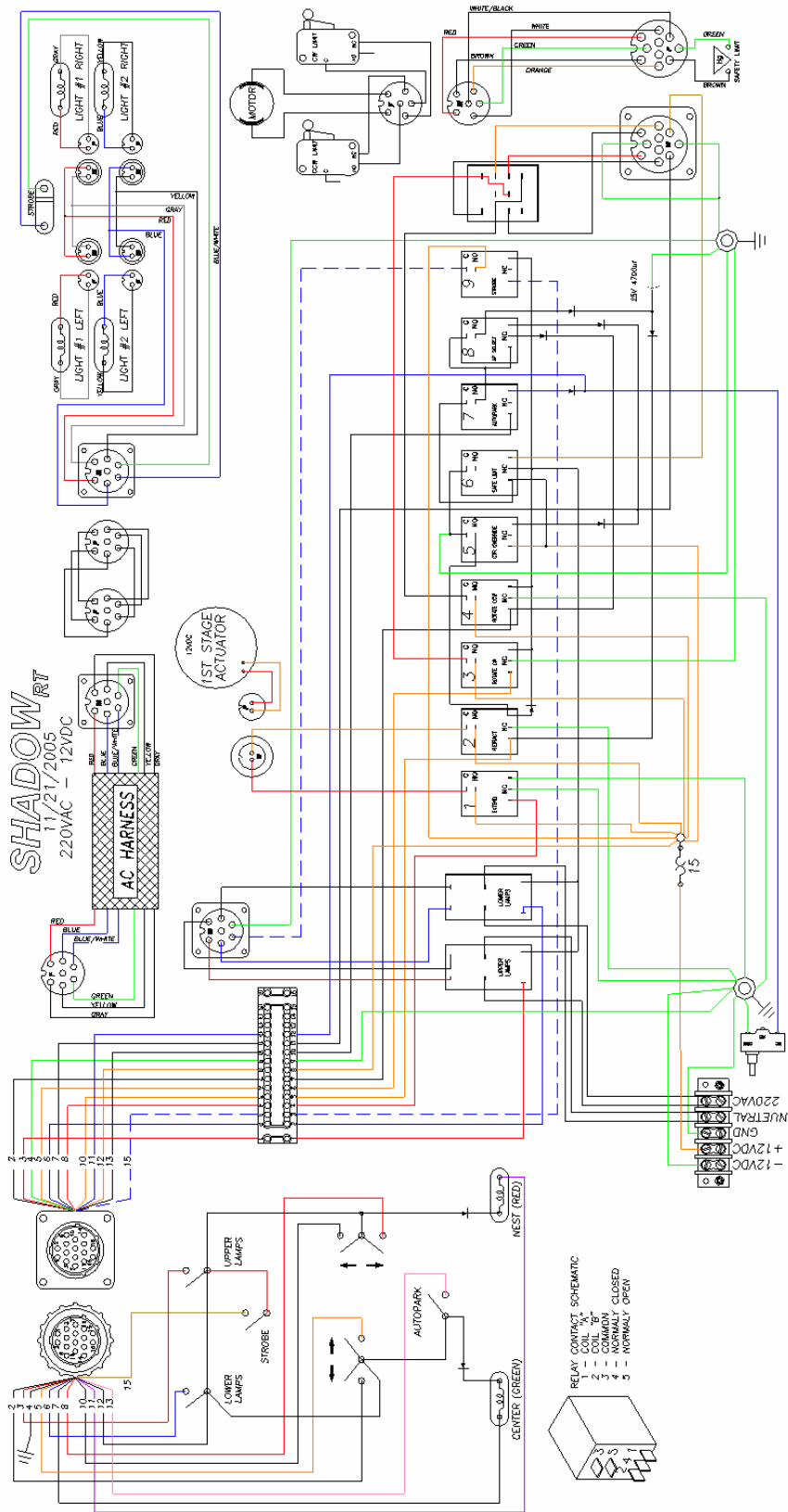


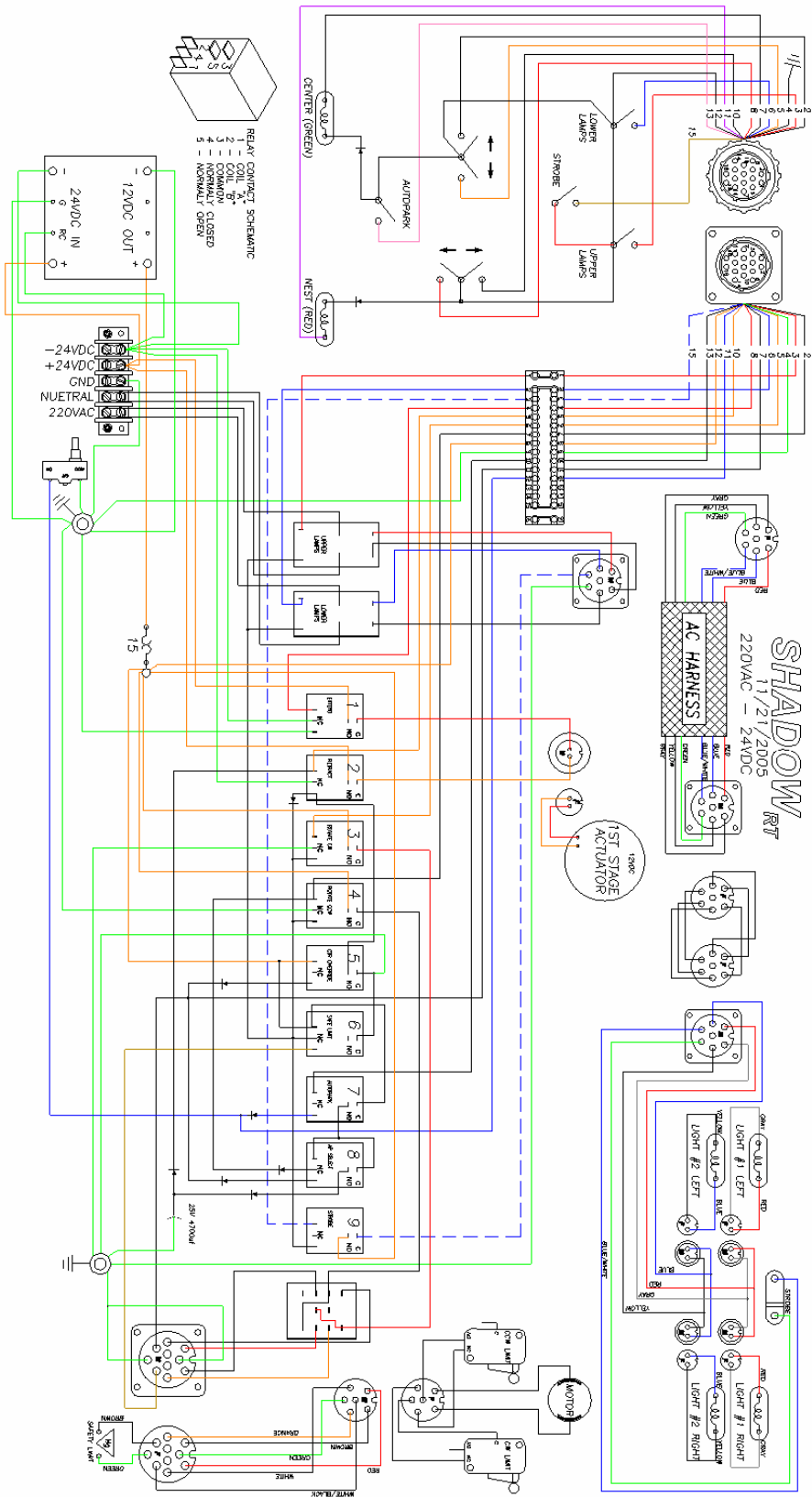


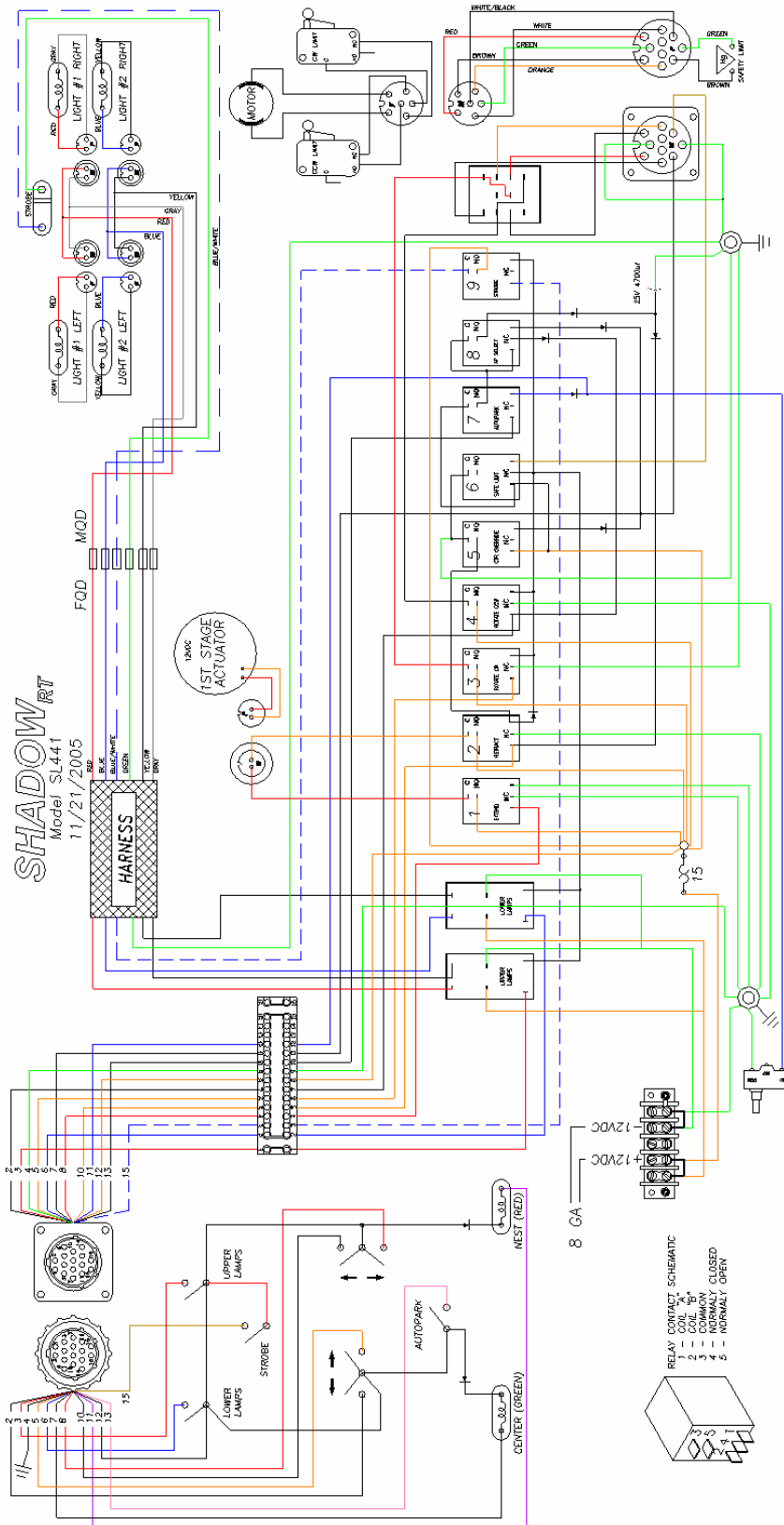
ITEM	QTY	PART NUMBER	DESCRIPTION
1	1	SLBASE:XRT	ASSEMBLY, BASE UNIT, SHADOW XRT
1.1	1	078-01001AE	FRAME, WELDMENT, SHADOW XRT
1.2	1	SLRotation_80	ASSEMBLY, ROTATION, SHADOW XRT
1.2.1	1	069-16333	BEARING, 6308, SEALED
1.2.2	1	STD HARDWARE	Bushing, Flanged, Bronze, FB1620-6, 1 ID
1.2.4	1	075-03300	Block, Retainer, Slip Ring, Knight2
1.2.5	2	STD HARDWARE	8-32 UNC x 1 PHP MS SS
1.2.6	2	STD HARDWARE	Washer, Lock, 18-8 SS, Internal, #8
1.2.9	2	078-01206W	TUBE, LIFT, WELDMENT, SHADOW XRT
1.2.10	1	078-03208	SUPPORT, REAR, SPINDLE, SHADOW XRT
1.2.11	2	078-03209	SUPPORT, PLATE, SPINDLE, SHADOW XRT
1.2.12	1	078-03412	Spindle, Rotation, Shadow XRT
1.2.13	1	078-03207	PLATE, ROTATION, SHADOW XRT
1.2.14	1	065-12370	MOTOR, 12VDC, GROSCHOPP, PNB2577
1.2.15	1	078-04005	MOUNT, MOTOR, ROTATION, SHADOW XRT
1.2.16	1	078-04006	MOUNT, REAR, MOTOR, SHADOW XRT
1.2.17	1	078-01016	STRIKER, SWITCH, ROTATION, SHADOW XRT
1.2.18	2	STD HARDWARE	Washer, Flat, SAE, 1/4", SS
1.2.19	1	STD HARDWARE	1/4-20 x 1 FISH MS SS
1.2.20	1	STD HARDWARE	Nut, Nylock, 1/4-20 UNC
1.2.21	4	STD HARDWARE	Washer, Lock, Spring, Regular, 1/4", SS
1.2.22	2	069-14222	SWITCH, MICRO, DPST
1.2.23	1	078-01017	SHAFT, DRIVE, ROTATION, SHADOW XRT
1.2.24	1	078-01018	COUPLER, DRIVE SHAFT, SHADOW XRT
1.2.25	3	STD HARDWARE	Pin, Spring, 3/16 x 1.25
1.2.26	2	070-00313	BLOCK, LIFT CLEVIS, CLIGHT
1.2.27	1	078-04007	MOUNT, REAR, MOTOR, SHADOW XRT
1.2.28	1	078-01019	BRACKET, SWITCH, NEST, SHADOW XRT
1.2.29	1	069-16360	SWITCH, Z-156Q-B7-K, OMRON
1.3	1	078-02102	COVER, LIFT ARM, SHADOW XRT
1.4	1	069-16365	ACTUATOR, 12 INCH, 12VDC
1.5	2	024-10527	PAD, 1/2 X 1 X 2, RUBBER
1.6	2	078-01015	SPACER, ACETAL, SHADOW XRT
1.7	2	STD HARDWARE	Bushing, Flanged, Bronze, FB810-12, 1/2 ID
1.8	4	STD HARDWARE	Nut, Nylock, Thin, 1/2-13 UNC
2	1	LampTree-SL422	TREE, LAMP, SL422, SHADOW RT
3	1	LampTree-SL429	TREE, LAMP, 1500W, SHADOW RT
4	1	LampTree-SL441	TREE, LAMP, 55W, SHADOW RT
5	1	LampTree-SL442	TREE, LAMP, SL442, SHADOW RT
6	1	LampTree-SL445	TREE, LAMP, 500W, SHADOW RT
7	1	LampTree-SL447	TREE, LAMP, SL447, SHADOW RT

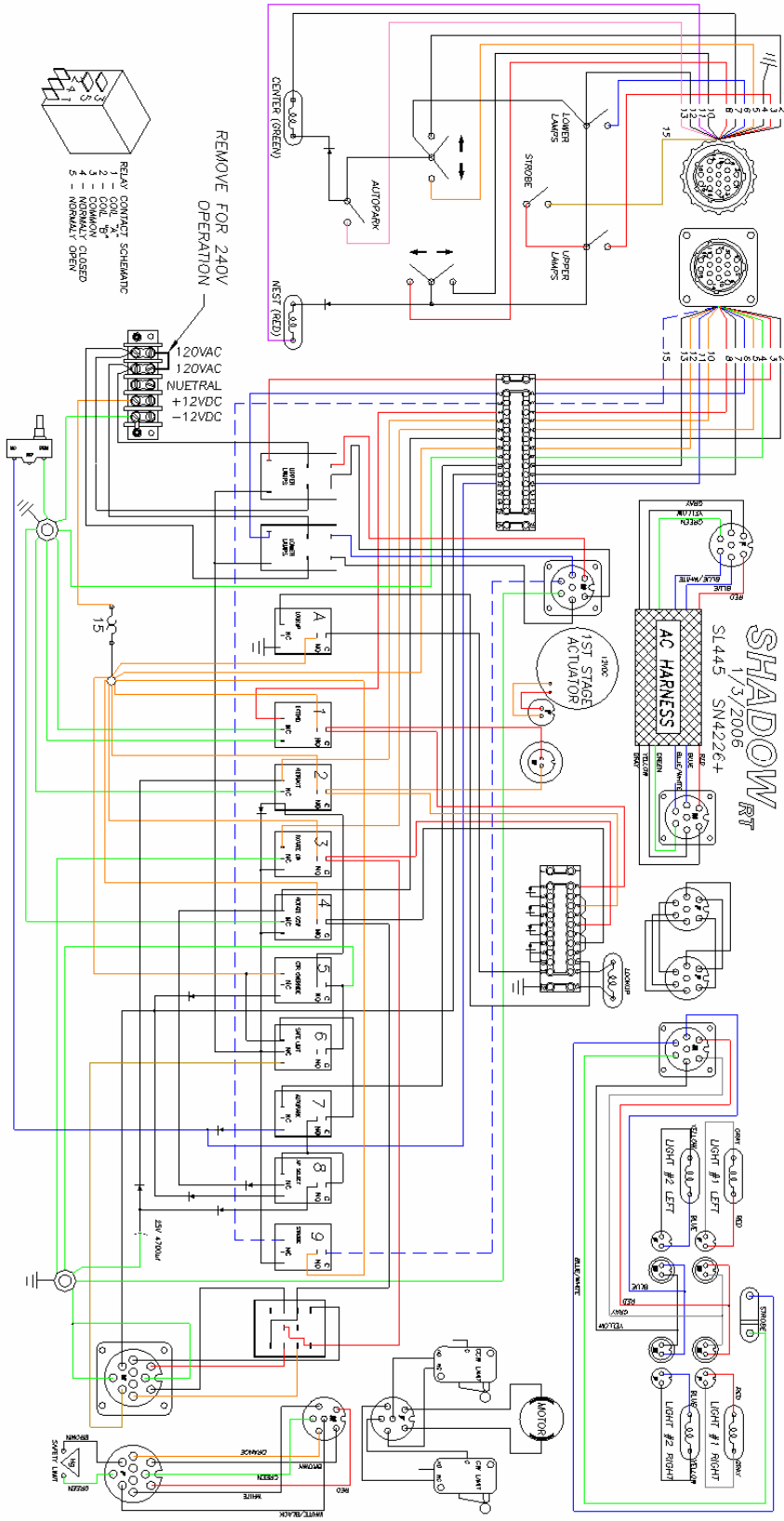
Parts List

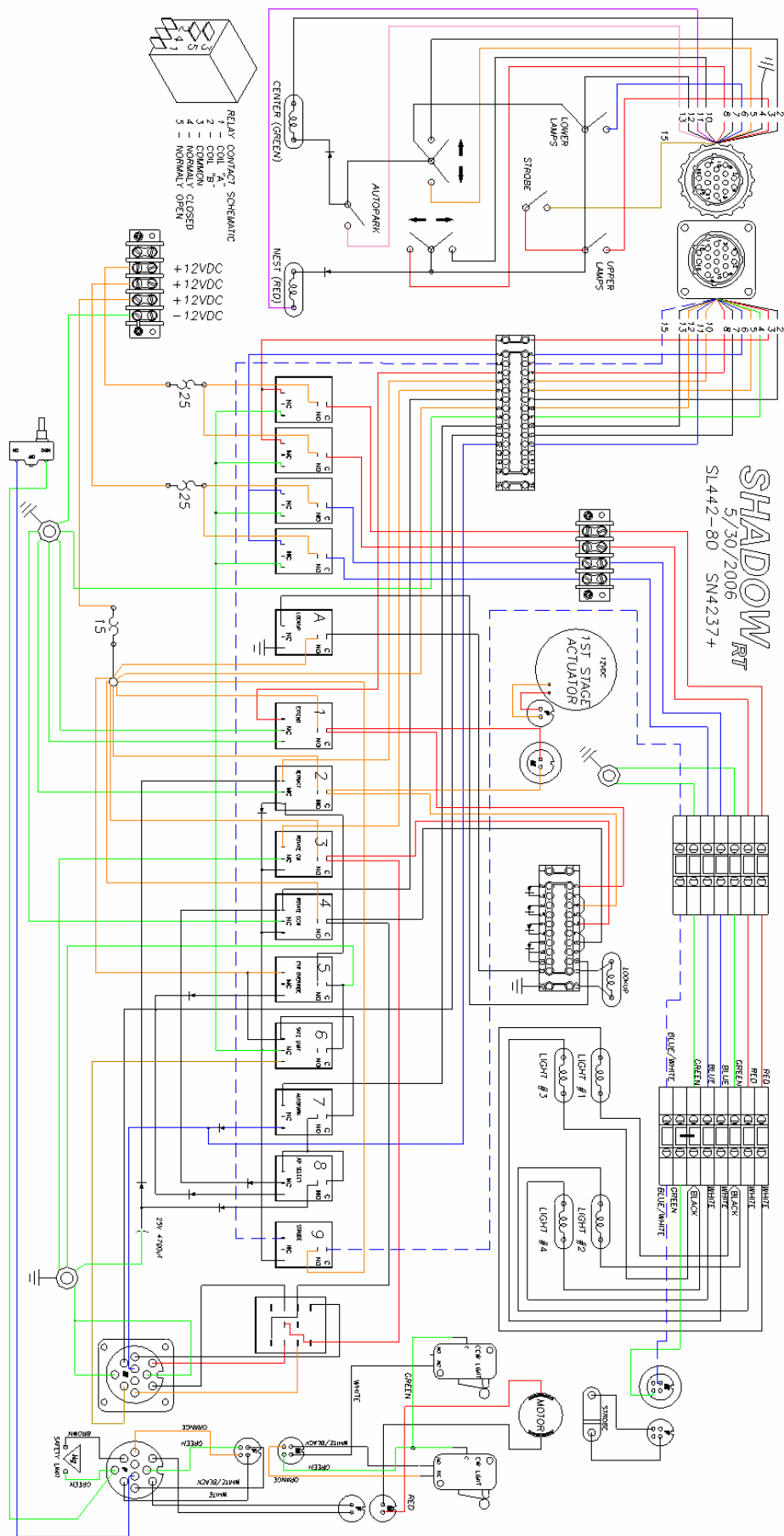












Limited Warranty

Five Year

COMMAND LIGHT warrants that the equipment is free from defects in materials and workmanship when used and operated for a period of five years. The responsibility of COMMAND LIGHT under this limited warranty is limited to the repair and replacement of any parts found defective. Parts must be returned to COMMAND LIGHT at 1303 East 11th Street, Loveland, Colorado 80537 with transportation charges prepaid (C.O.D. shipments will not be accepted).

Prior to returning defective parts to COMMAND LIGHT, the original purchaser shall make a claim by contacting COMMAND LIGHT at 1(800)797-4296 to obtain an RMA number, or in writing to at the above address indicating the model number, serial number and type of defect. No parts or equipment will be received by COMMAND LIGHT for repair or replacement under this warranty without specific authority in advance.

Any part damaged by improper installation, overloading, abuse or accident of any type or cause is not covered by this warranty.

All equipment manufactured by us is tested before leaving our plant, and is shipped in good working order and condition. We therefore extend to the original purchasers the following Limited Warranty for the period of five years from the original date of purchase:

1. This warranty does not apply to defects caused by accident, misuse, neglect, or wear and tear. Nor can we be held responsible for incidental and consequential expense and loss, nor does this warranty apply to equipment where alterations have been executed without our knowledge or consent. These conditions are readily discernable when the equipment is returned to us for inspection.
2. On all component parts not manufactured by COMMAND LIGHT, their warranty is to the extent that the manufacturer of such component warrants them to COMMAND LIGHT, if at all. Look in your local business telephone directory for the nearest repair station for the brand of parts you have or write to us for the address.
3. If equipment received has been damaged in transit, a claim should be made against the carrier within three days, as we assume no responsibility for such damage.
4. Any service other than our Authorized Service voids this warranty.
5. This warranty is in lieu of and is intended to exclude all other warranties, express or implied, oral or written, including any warranties of MERCHANTIBILITY or FITNESS for a particular purpose.